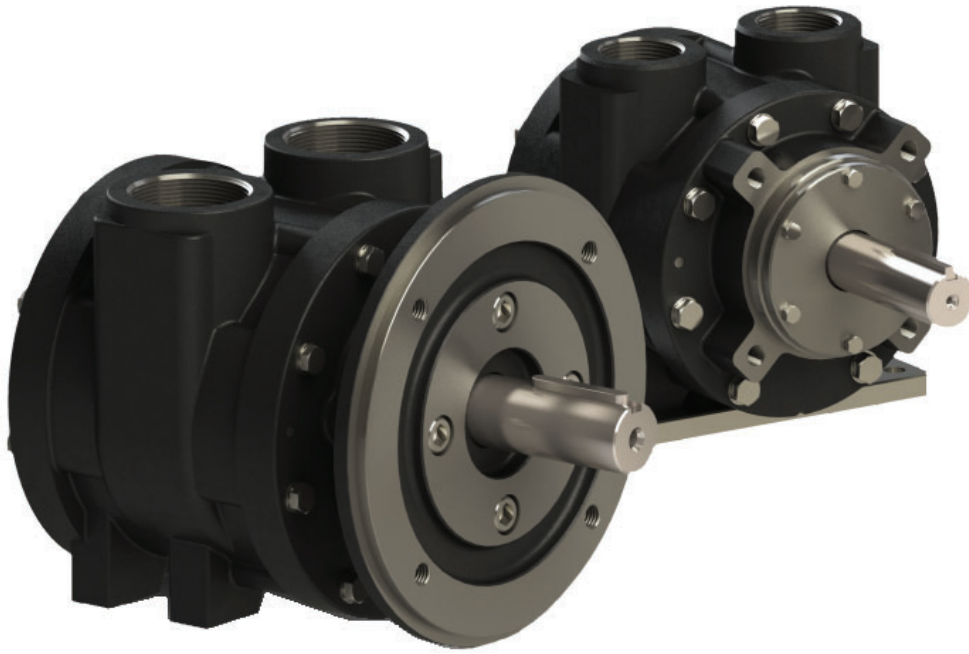


PNEUMOTOR INC.

www.pneumotor.net | 3555B Electric Ave. | Port Huron MI 48060 | 810-662-8505 | sales@pneumotor.net



'Let us help you select the right air motor for your application'

Applications

- Winches
- Mixing Equipment
- Ventilators
- Packaging Machinery
- Hose Reels
- Conveyors
- Pump Drives

Advantages

- Non-Shock Startup
- Instantly Reversible
- Compact & Lightweight
- Variable Speed & Torque
- Resistant To Harsh Conditions
- ATEX Certification Possible

Customizations

- Different Housing Materials
- In-Line & Right-Angle Gearboxes Available
- Corrosion Resistant Coatings
- OEM Numbers & Packaging
- Operator Control Options
- Local Support Center
- Refurbishment Programs

VANE MOTORS



Performance at 7 BAR / 100 PSI

Vane Motor VA or INOX (Stainless Steel)					
Type	Max. RPM	Max. Power		Min. Start Torque	
		H.P.	kW	lbs	Nm
V1	6000	0.70	0.52	6.8 in.	0.8
V2	4000	1.18	0.88	20 in.	2.3
V4	4000	2.80	2.09	3.6 ft.	4.9
V6	3000	5.20	3.88	6.3 ft.	8.5
V8	3000	7.55	5.63	12.6 ft.	17.1
V10	2400	13.7	10.22	27.5 ft.	37.3
V12	1800	18.8	14.02	54 ft.	73.2

Standard Vane Air Motors are the most common pneumatic motor in the world. They are available in a broad range of power and can operate in any position. We offer face, foot, IEC or NEMA mounting configurations. Stainless steel is available upon request. Let us pair your motor with a gear box for even more torque!

VANE MOTORS NON-LUBE



Performance at 7 BAR / 100 PSI

Vane Motor Non Lubricated (NL)					
Type	Max. RPM	Max. Power		Min. Start Torque	
		H.P.	kW	lbs	Nm
V1-NL	4500	0.54	0.40	6.1 in.	0.7
V2-NL	3000	0.97	0.72	18 in.	2.0
V4-NL	3000	2.13	1.59	3.2 ft.	4.4
V6-NL	2225	3.66	2.73	5.7 ft.	7.7
V8-NL	2225	5.59	4.17	11.3 ft.	15.4
V10-NL	1600	9.72	7.25	24.8 ft.	33.6
V12-NL	1350	12.71	9.48	47.8 ft.	64.8

GLOBE's Standard Air Motor is offered in a non-lube version. Running oil free has many advantages. It keeps the air free of contaminants and reduces maintenance costs. Our non-lube motors are available with face, foot, IEC or NEMA mounting configurations.

'We stock and service all types of GLOBE Air Motors'

COMPACT VANE MOTORS

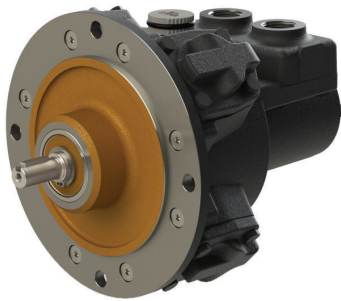


Performance at 7 BAR / 100 PSI

Compact Vane Motor #M Series M53 Series M400 Series					
Type	Max. RPM	Max. Power		Max. Start Torque	
		H.P.	kW	lbs.	Nm
2M	200-19000	0.36	0.27	8.9 ft.	12
M53	270-15000	0.53	0.38	29.5 ft.	40
5M	200-14000	0.90	0.67	31.7 ft.	43
9M	440	1.30	1	51.6 ft.	70
M400	36-3200	4.00	2.9	1756 ft.	2381

GLOBE's Compact Vane Motors are available with one or more integrated planetary gearboxes. Choose from three different series, #M (Archimedes), M53, and M400. Many different speed and torque combinations are possible. These lightweight, compact motors are perfect for small, close-fitting applications.

PISTON MOTORS



Performance at 8 BAR / 115 PSI

Piston Motor					
Type	Max. RPM	Max. Power		Min. Start Torque	
		H.P.	kW	lbs.	Nm
RM110	2400	2.4	1.7	6 ft.	9
RM210	2400	5.4	4.0	20 ft.	28
RM310	2400	10.2	7.5	34 ft.	47
RM410	2000	19.0	14.0	73 ft.	100
RM510	1500	30.0	22.0	161 ft.	220
RM610	2000	32.0	23.0	176 ft.	240

GLOBE Piston Motors are built for power. Its rugged design can withstand harsh environmental conditions. We often pair these motors with a gearbox for even more torque at lower speeds. In addition to motor/reducer combinations, we also offer pneumatic brakes and operator controls.

COMPACT PISTON MOTORS



Performance at 8 BAR / 115 PSI

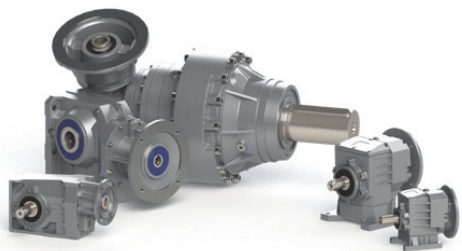
Compact Piston Motor					
Type	Max. RPM	Max. Power		Min. Start Torque	
		H.P.	kW	lbs.	Nm
RM004	60-800	0.09	0.07	1.25 ft.	1.7
RM006	50-650	0.21	0.16	2.5 ft.	3.6
RM012	50-450	0.21	0.16	10.7 ft.	14.5
RM024	50-450	0.51	0.38	23.6 ft.	32

This small air motor is unique because of its low speed combined with high torque, without the use of a gearbox. Ideal for compact or mixing applications, its available in different housing materials and can be operated lube free. Please inquire if ATEX certification is required.

BRAKES

Brakes Vane Motor				
BN Brake	Holding Torque		Release Pressure	
	Min.	Max.	PSI	BAR
V2...V12	13.3 lbs.ft.	442 lbs.ft.	50	3.4

GEARBOXES | REDUCERS



Gearboxes

Type	Air Motor Type	Mounting
Worm	Vane	Foot, Flange, Angle
Coaxial	Vane / Piston	Foot & Flange
Planetary	Vane / Piston	Foot, Flange, Angle

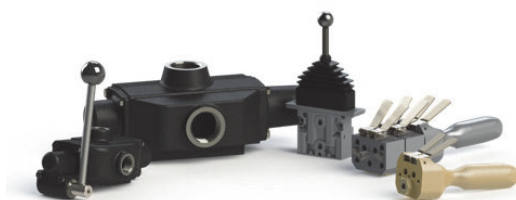
MUFFLER | SILENCERS



Silencers (Mufflers)

Type	Air Motor Type	Port Size
High Flow	All	1/4" - 2"
Stainless Steel	All	1/8" - 1"

CONTROL & FLOW VALVES



Controls

Type	Air Motor Type	Port Size
RCV	All	1/4" - 2"
HCV	All	1/4" - 2"
Pendant	All	2, 4, 6 Signals
Lever	All	2 Signals

AIR PREPARATION - FRL UNITS



FRL (Air Quality)

Type	Air Motor Type	Port Size
Multiple	All	1/4" - 2"

PARTS & SERVICE



Service Kits

Type	Air Motor Type
All	All

PNEUMOTOR INC.

www.pneumotor.net | 810-662-8505 | sales@pneumotor.net