



GLOBE AIRMOTORS B.V.

Series M400..... - hP 4,0 Kw 2,9



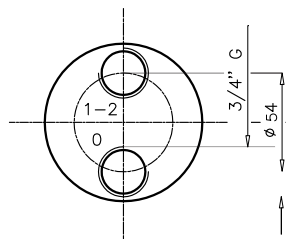
PERFORMANCE AND DIMENSIONS																			
MODEL		Free Speed-RPM			Speed at maximum Power RPM			Maximum torque Power Nm			Starting torque Nm			Stall torque Nm			Length "A" mm	Weight Kg	No. of reduction gears
Reversible	Non Reversible	7 bar	5 bar	3 bar	7 bar	5 bar	3 bar	7 bar	5 bar	3 bar	7 bar	5 bar	3 bar	7 bar	5 bar	3 bar			
		HP 4,0	HP 2,6	HP 1,6	HP 4,0	HP 2,6	HP 1,6	HP 4,0	HP 2,6	HP 1,6	HP 4,0	HP 2,6	HP 1,6	HP 4,0	HP 2,6	HP 1,6			
M400RA	M400NA	3200	2900	2400	1600	1450	1200	17	12	8	27	19	13	35	25	17	210	6,2	1
M400RB	M400NB	1900	1700	1400	950	850	700	29	21	14	47	33	23	58	43	29	210	6,2	1
M400RC	M400NC	1050	950	800	525	475	400	53	37	27	83	58	44	107	74	54	210	6,2	1
M400RAA	M400NAA	650	570	480	325	285	240	86	66	44	137	105	73	171	132	88	247	7,8	2
M400RAB	M400NAB	460	410	350	230	205	175	117	86	63	186	137	100	235	171	127	247	7,8	2
M400RBA	M400NBA	380	340	280	190	170	140	147	107	78	235	166	122	294	215	156	247	7,8	2
M400RBB	M400NBB	270	240	200	135	120	100	200	147	105	323	235	171	401	294	210	247	7,8	2
M400RCA	M400NCA	210	180	160	105	90	80	264	176	137	421	284	225	529	352	274	247	7,8	2
M400RCB	M400NCB	150	130	110	75	65	55	372	264	196	588	421	313	744	529	392	247	7,8	2
M400RAB4	M400NAB4	110	104	85	55	52	43	480	343	254	764	548	406	960	686	509	292	9,8	3
M400RBA4	M400NBA4	95	84	70	47	42	35	588	421	308	940	676	490	1.176	842	617	292	9,8	3
M400RBB4	M400NBB4	70	60	50	35	30	25	808	578	426	1.293	931	686	1.617	1.156	852	292	9,8	3
M400RCA4	M400NCA4	52	46	40	26	23	20	1.058	764	558	1.685	1.225	891	2.116	1.528	1.117	292	9,8	3
M400RCB4	M400NCB4	36	32	28	18	16	14	1.470	1.078	784	2.381	1.715	1.254	2.940	2.156	1.568	292	9,8	3

Air consumption	63 l/sec at 7 bar	58 l/sec at 6 bar	52 l/sec at 5 bar	44 l/sec at 4 bar	32 l/sec at 3 bar	21 l/sec at 2 bar
------------------------	-------------------	-------------------	-------------------	-------------------	-------------------	-------------------

lubrication: 5-6 drops/min in continuous service
 10-12 drops/min in intermittent service
filtration: 64 μ or better
radial load: 4000 N max
axial load: not allowed
Operating temperature: -20°C to +80°C

0 = OUT
 1 = CW (See from cap)
 2 = CCW (See from cap)

MOTOR NOT REVERSIBLE



MOTOR REVERSIBLE

