

BRAKED COMPACT PISTON AIR MOTORS

GLOBE Airmotors BV has a wide range of pneumatic brakes which can be mounted onto our compact piston

air motors. For more information contact your GLOBE Airmotor supplier.



GLOBE PNEUMATIC BRAKES - BN SERIES



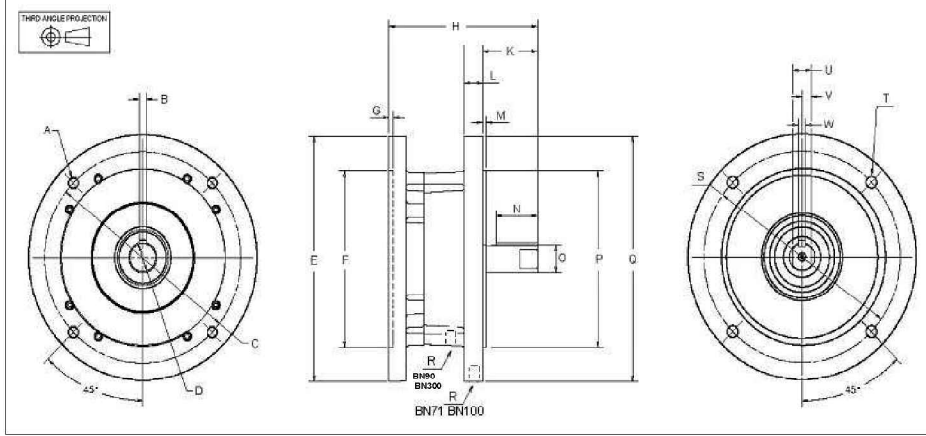
GLOBE BN brakes are fail-safe brakes (spring engaged, air released). They can be used as a static brake and under certain conditions in dynamic applications. The brake module bolts directly onto the motor mounting face with an IEC or NEMA connection flange. The brakes are certified according to the European Explosive Directive ATEX II cat. 2 G&D T3 (in static applications only).

- Easy interchangeable because of independent brake module;
- Cast-iron or steel housing and excellent thermal capacity for use in harsh environments;
- Long life-time;
- Certified according to the European Explosive Directive ATEX II cat. 2 G&D T3.

THE ADVANTAGES OF THE BN BRAKES INCLUDE:

- Brake can be used in dynamic applications;
- Field serviceable;
- Easy flange connection according to IEC and NEMA standards;
- Low maintenance because very few parts are exposed to wear;
- Compact design;

PNEUMATIC BRAKES - BN SERIES - IEC MOUNTING



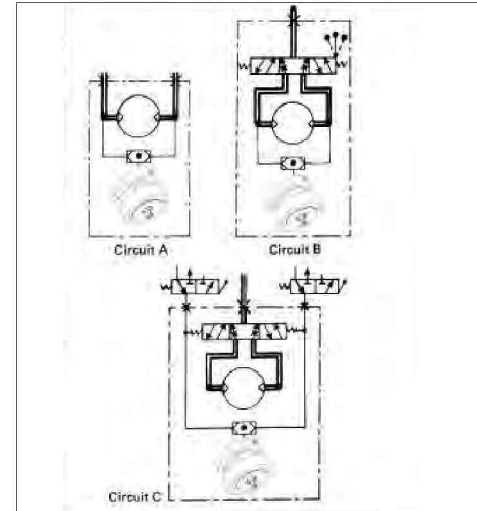
Brake type	A ∅	B	C ∅	D ∅	E ∅	F ∅	G	H	K	L	M	N	O ∅
BN71	10 (0.39")	5 (0.19")	130 (5.12")	14h7 (0.55")	160 (6.30")	110h7 (4.33")	3.5 (0.14")	137 (5.39")	30 (1.18")	44.6 (1.76")	2.3 (0.09")	25 (0.98")	14h7 (0.55")
BN90	M10	8 (0.31")	165 (6.49")	24h7 (0.94")	200 (7.87")	130h7 (5.12")	5 (0.19")	195 (7.67")	50 (1.97")	13 (0.51")	3.5 (0.14")	45 (1.77")	24h7 (0.94")
BN100	M12	8 (0.31")	215 (8.46")	28h7 (1.10")	250 (9.84")	180h7 (7.08")	5 (0.19")	163 (6.41")	60 (2.36")	19 (0.75")	4 (0.16")	55 (2.16")	28h7 (1.10")
BN300	M14	10h9 (0.39")	265 (10.43")	38h7 (1.49")	300 (11.81")	230h7 (9.05")	4 (0.16")	234 (9.21")	79 (3.11")	-	4 (0.16")	55 (2.16")	38h7 (1.49")

Brake type	P ∅	Q ∅	R	S ∅	T ∅	U	V	W
BN71	110h7 (4.33")	160 (6.30")	1/8 BSP	130 (5.12")	10 (0.39")	11 (0.43")	5.5 (0.21")	5 (0.19")
BN90	130h7 (5.12")	200 (7.87")	1/8 BSP	165 (6.49")	12 (0.47")	18 (0.71")	9 (0.35")	8 (0.31")
BN100	180h7 (7.08")	250 (9.84")	1/8 BSP	215 (8.46")	14 (0.55")	20.6 (0.81")	10.3 (0.40")	8 (0.31")
BN300	230h7 (9.05")	300 (11.81")	1/8 BSP	265 (10.43")	M14	20.6 (0.81")	10.3 (0.40")	8 (0.31")

Brake type	Flange type	Holding torque	Release pressure
BN71	IEC71 (B5)	14Nm / 10.3 lb-ft	3.4 bar / 50 psi
BN90	IEC90 (B5)	29Nm / 21.4 lb-ft	3.4 bar / 50 psi
BN100	IEC100 (B5)	75Nm / 55.3 lb-ft	3.4 bar / 50 psi
BN300-4	IEC132 (B5)	300Nm / 221 lb-ft	2.2 bar / 32 psi
BN300-6	IEC132 (B5)	450Nm / 332 lb-ft	3.2 bar / 46 psi
BN300-8	IEC132 (B5)	600Nm / 442 lb-ft	4.3 bar / 62 psi

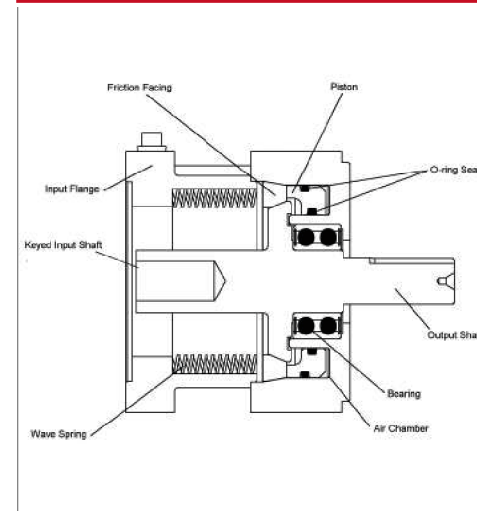
INSTALLATION OPTIONS

The brake releases with pneumatic pressure. When the pneumatic pressure drops below a pre-set air pressure the brake engages.



- CIRCUIT (A):** installation without control valve. The shuttle valve allows brake operation for dual rotation.
- CIRCUIT (B):** Installation with hand control valve (HCV). The HCV controls the rotation direction of the output shaft. The shuttle valve allows brake operation for dual rotation.
- CIRCUIT (C):** Installation with remote controlled valve (RCV). The RCV makes it possible to change the rotation direction of the shaft from a distance. The shuttle valve allows brake operation for dual rotation. If you need help or advice on how to correctly install the piping for the brake release please contact us. Note - please make sure the brake has enough air pressure to release at all time.

SECTION DRAWING GLOBE BN71 AND BN90 BRAKE



SECTION DRAWING GLOBE BN100 BRAKE

