

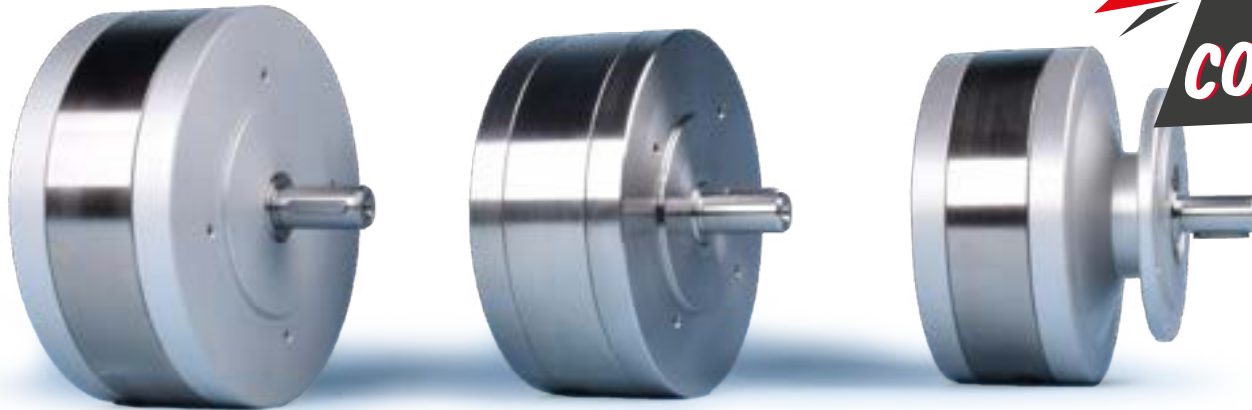


**GLOBE** AIRMOTORS B.V.

GLOBE Airmotors | Boerhaaveweg 9-11 | NL - 2408 AD Alphen a/d Rijn | Tel +31 172 426 608 | info@globe-benelux.nl

## Specifications: RM024

Compact Piston Air motor - 32 Nm / 23.6 lbs ft.




The GLOBE

**COMPACT PISTON AIR MOTOR**

### Contents

Performance	2
Dimensions & Load diagram SXA & SXX	3
Dimensions & Load diagram SFA & SFX	3
Selection Code Compact piston air motor	4

CE  II 2G Ex h IIC T5 Gb  
II 2D Ex h IIIC T100°C Db  
Ta = -10° + 60°C

[globe-benelux.nl](http://globe-benelux.nl)

# RM024

Compact Piston Air motor - 32 Nm - / 23.6 lbs ft.

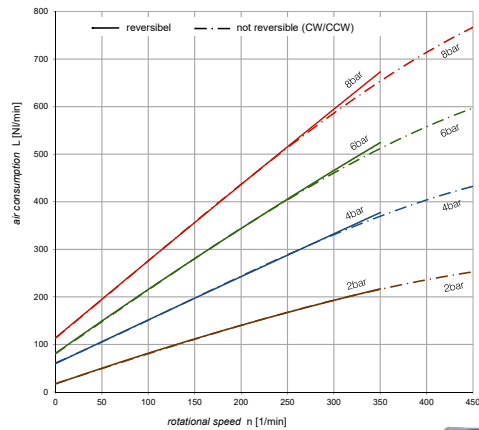
The GLOBE compact piston air motors RM024 is the largest and most powerful in the series. These motors have a number of unique features. With their low air consumption, they are up to 90% more efficient than other air motors. They have high torque at low speed without the use of a gearbox. In addition, they have a low noise level.

- » High starting torque
- » Starting torque 32 Nm / 23.6 lbs ft.
- » ATEX certified
- » Oil free (optional)
- » Silicone free
- » Easy to control
- » Very low air consumption
- » Reliable

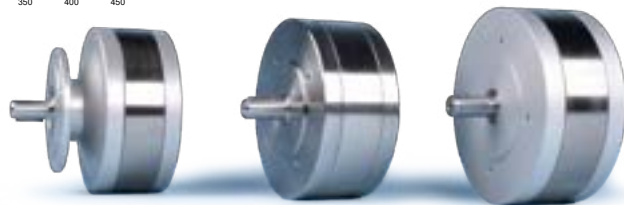
## RM024 - Specifications

Type	Torque		Rotation speed (reversible)		Weight (reversible)		Weight CW & CCW		IP	Flange	ATEX
	Nm	lbf.ft	rpm	rpm	kg	lbs	kg	lbs			
RM024-SXA	24	18	50 - 350	50 - 450	7.6	16.8	7.6	16.8	54	No	Yes
RM024-SXX	24	18	50 - 350	50 - 450	7.6	16.8	7.6	16.8	50	No	No
RM024-SFA	24	18	50 - 350	50 - 450	8.2	18	8.2	18	54	Yes	Yes
RM024-SFX	24	18	50 - 350	50 - 450	8.2	18	8.2	18	50	Yes	No
RM024-IXA	24	18	50 - 350	50 - 450	10.9	24	10.9	24	54	No	Yes
RM024-IXX	24	18	50 - 350	50 - 450	10.9	24	10.9	24	64	No	No
RM024-IFA	24	18	50 - 350	50 - 450	12	26.5	12	26.5	54	Yes	Yes
RM024-IFX	24	18	50 - 350	50 - 450	12	26.5	12	26.5	64	Yes	No

## Air consumption RM024

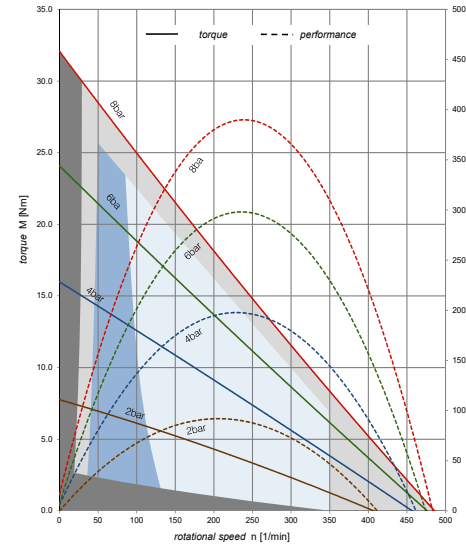


- » Max. power: 0.38 kW / 0.51 H.P.
- » Torque at max. power: 15 Nm / 11 lbs ft.
- » Starting torque: 32 Nm / 23.6 lbs. ft
- » Speed of rotation: 50 - 450 rpm. CCW or CW
- » Weight: 3.8 kg. no flange  
4.6 kg. with flange
- » Air consumption: 460 NI/min. / 16 CFM
- » Waterproof: 50 to 64 IP



## Performance RM024

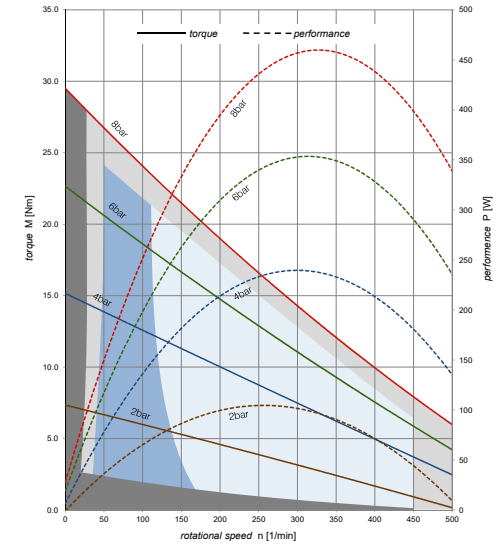
Reversible



- no continuous operation
- operation only after consulting supplier
- regulation with throttle
- regulation with pressure reduction

## Performance RM024

Clockwise (CW) & Counter clockwise (CCW)

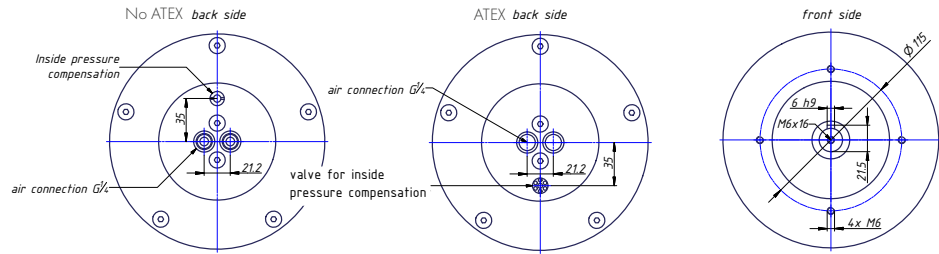
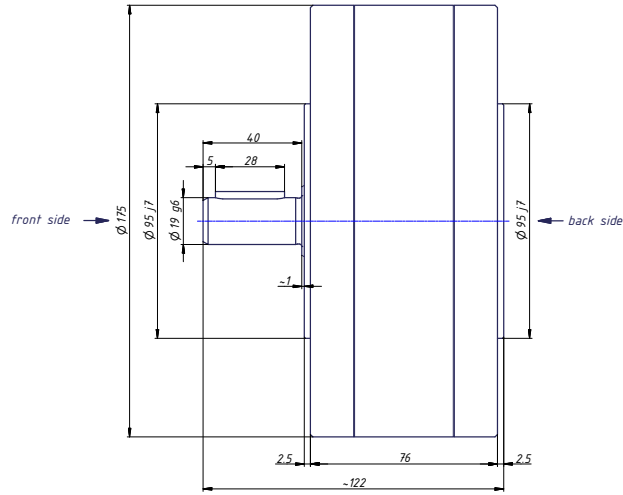


- no continuous operation
- operation only after consulting supplier
- regulation with throttle
- regulation with pressure reduction



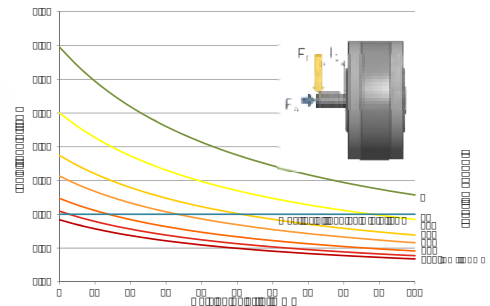
### Dimensions RM024 SXA & IXA | SXX & IXX

Nickel plated steel housing & Inox housing | no flange | ATEX & No ATEX



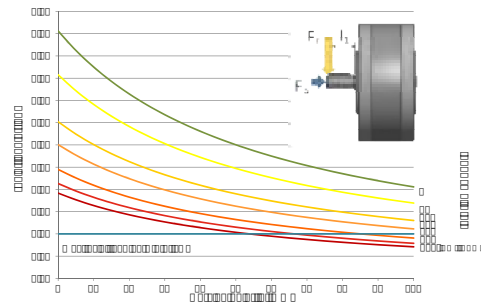
### Load diagram RM024 SXA & IXA

Nickel plated steel housing & Inox housing | no flange | ATEX



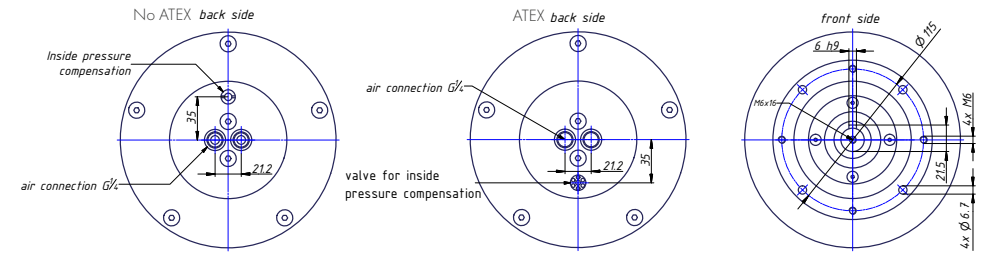
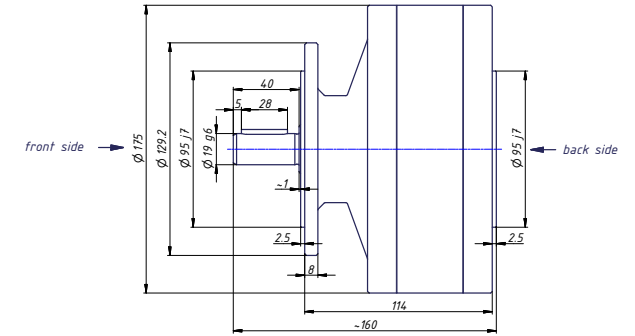
### Load diagram RM024 SXX & IXX

Nickel plated steel housing & Inox housing | no flange



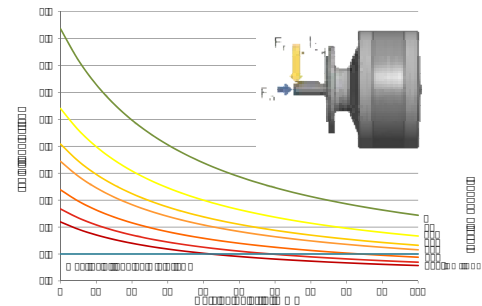
### Dimensions RM024 SFA & IFA | SFX & IFX

Nickel plated steel housing & Inox housing | flange | ATEX & No ATEX



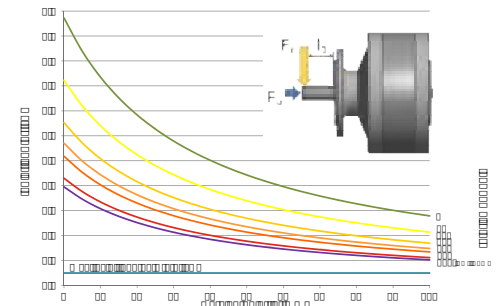
### Load diagram RM024 SFA & IFA

Nickel plated steel housing & Inox housing | flange | ATEX



### Load diagram RM024 SFX & IFX \*

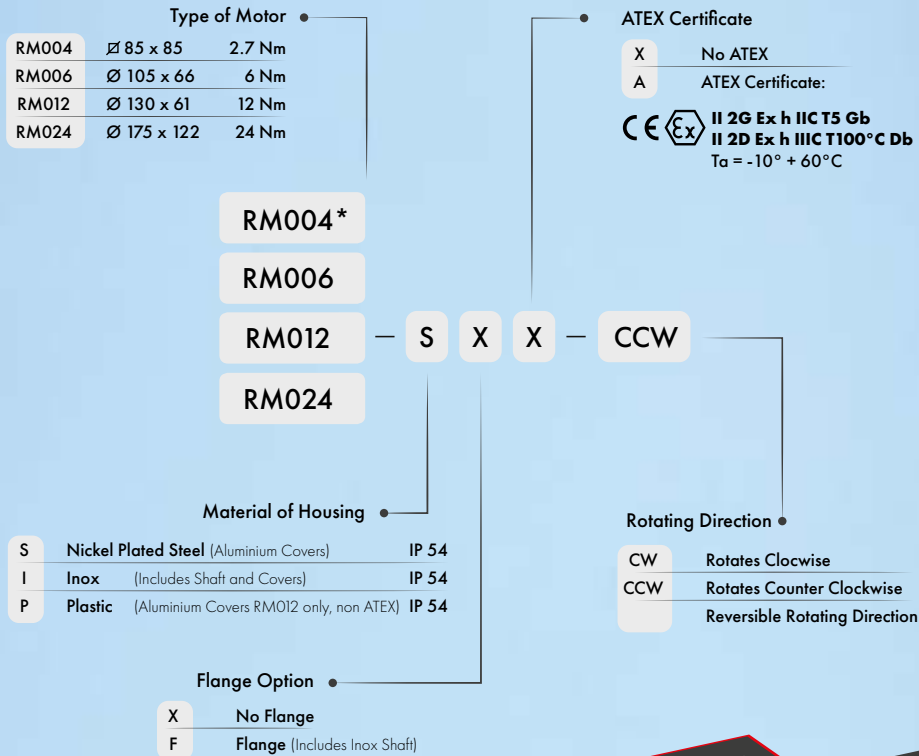
Nickel plated steel housing | flange



\*For IFX the radial load is 30% less.

## Selection Code

Make your GLOBE compact piston air motor ordering code



\*Standard shaft diameter is ∅9 mm, optional available in ∅14 mm

Order your  
**COMPACT AIR MOTOR:**  
[info@globe-benelux.nl](mailto:info@globe-benelux.nl)



## Specifications

Type	Torque		Rotation speed (reversible)	Rotation speed (CW & CCW)	Weight (reversible)		Weight CW & CCW		IP	Flange	ATEX	Page
	Nm	lbf.ft	rpm	rpm	kg	lbs	kg	lbs				
RM004-SXA	2.7	2.0	60 – 550	100 – 800	2.2	4.8	2.1	4.6	54	No	Yes	12 - 13
RM004-IXA	2.7	2.0	60 – 550	100 – 800	4.9	10.8	4.6	10.1	54	No	Yes	12 - 13
RM006-SXA	6	4.4	50 – 650	-	2.8	6.2	-	-	54	No	Yes	16
RM006-SXX	6	4.4	50 – 650	-	2.8	6.2	-	-	54	No	No	16
RM006-SFA	6	4.4	50 – 650	-	3.1	6.8	-	-	54	Yes	Yes	17
RM006-SFX	6	4.4	50 – 650	-	3.1	6.8	-	-	54	No	No	17
RM012-SXA	12	8.9	50 – 350	50 – 450	3.8	8.3	3.8	8.3	54	No	Yes	20
RM012-SXX	12	8.9	50 – 350	50 – 450	3.8	8.3	3.8	8.3	50	No	No	20
RM012-SFA	12	8.9	50 – 350	50 – 450	4.6	10.1	4.6	10.1	54	Yes	Yes	21
RM012-SFX	12	8.9	50 – 350	50 – 450	4.6	10.1	4.6	10.1	50	Yes	No	21
RM012-IXA	12	8.9	50 – 350	50 – 450	4.9	10.8	4.9	10.8	54	No	Yes	20
RM012-IXX	12	8.9	50 – 350	50 – 450	4.9	10.8	4.9	10.8	64	No	No	20
RM012-IFA	12	8.9	50 – 350	50 – 450	6.5	14.3	6.5	14.3	54	Yes	Yes	21
RM012-IFX	12	8.9	50 – 350	50 – 450	6.5	14.3	6.5	14.3	64	Yes	No	21
RM012-PXX	12	8.9	50 – 350	50 – 450	4.2	9.2	4.2	9.2	64	No	No	22
RM012-PFX	12	8.9	50 – 350	50 – 450	5.8	12.8	5.8	12.8	64	Yes	No	22
RM024-SXA	24	18	50 – 350	50 – 450	7.6	16.8	7.6	16.8	54	No	Yes	25
RM024-SXX	24	18	50 – 350	50 – 450	7.6	16.8	7.6	16.8	50	No	No	25
RM024-SFA	24	18	50 – 350	50 – 450	8.2	18	8.2	18	54	Yes	Yes	26
RM024-SFX	24	18	50 – 350	50 – 450	8.2	18	8.2	18	50	Yes	No	26
RM024-IXA	24	18	50 – 350	50 – 450	10.9	24	10.9	24	54	No	Yes	25
RM024-IXX	24	18	50 – 350	50 – 450	10.9	24	10.9	24	64	No	No	25
RM024-IFA	24	18	50 – 350	50 – 450	12	26.5	12	26.5	54	Yes	Yes	26
RM024-IFX	24	18	50 – 350	50 – 450	12	26.5	12	26.5	64	Yes	No	26