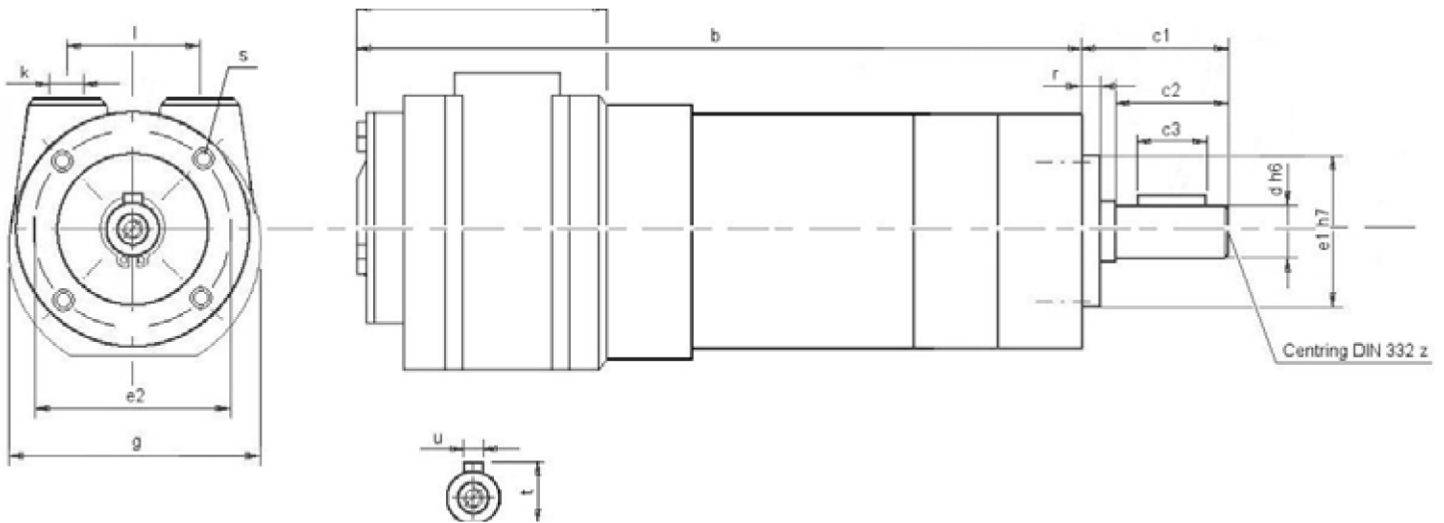
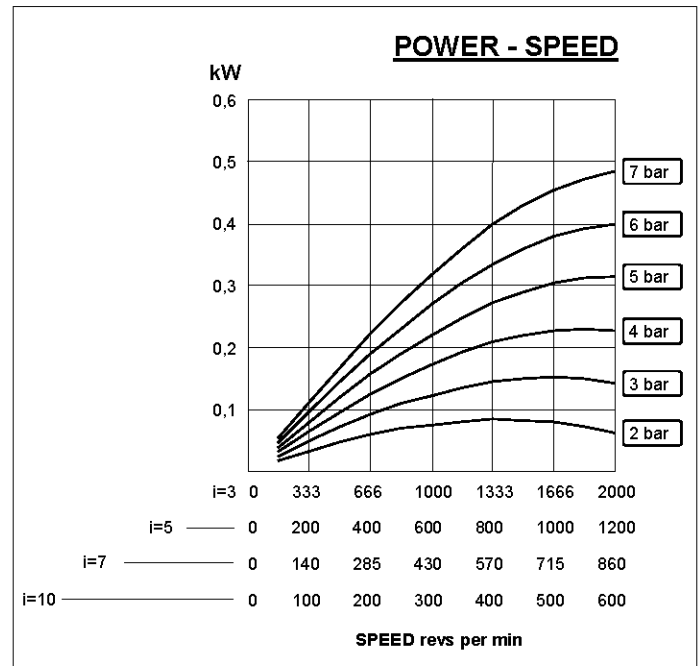
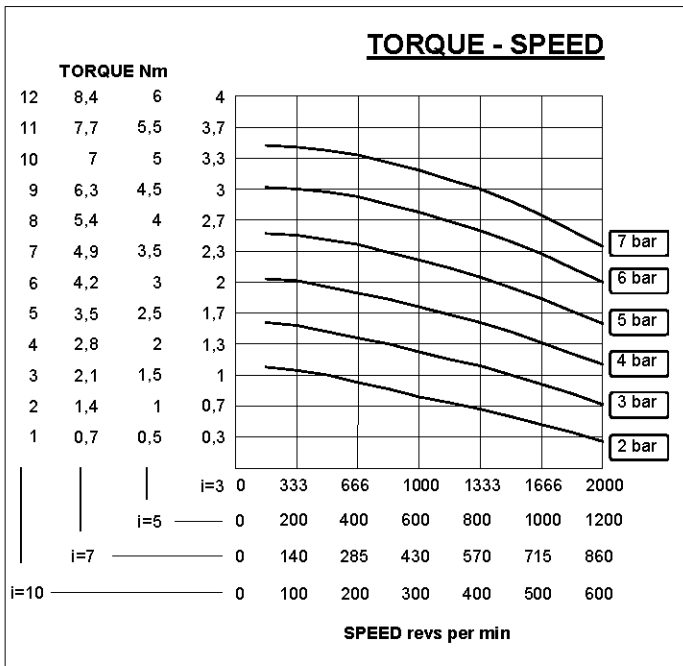


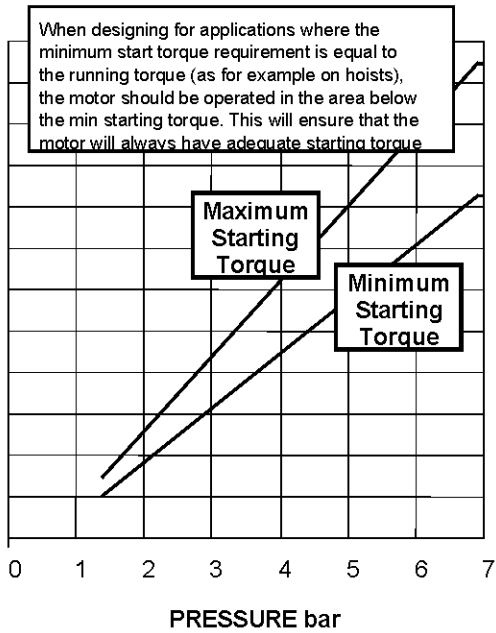
GLOBE VANE VA1 AIR MOTORS WITH PLANETARY GEARBOX



Motor	l	a	b	c1	c2	c3	d	e1	e2	f	g	k	l	r	s	t	u	v	w	z
VA1PFG01	3 5 7 10	69	175	39	30	25	14k6	40h7	52	65	71	1/4"NPT	36	8	M5x10	16	5	4,2	4	DM5
VA1PFG02	16 20 28 40	69	198	39	30	25	14k6	40h7	52	65	71	1/4"NPT	36	8	M5x10	16	5	4,2	4	DM5
VA1PFG04	40 50 70 100	69	226	49	40	32	20k6	55h7	70	85	71	1/4"NPT	36	8	M6x12	22,5	6	8,3	6	DM6



TORQUE - PRESSURE



STARTING TORQUE will vary between the minimum and maximum levels shown. The actual starting torque will depend on the air inlet pressure and the motor crank position.

	TORQUE Nm			
12	8,4	6	4	
11	7,7	5,5	3,7	
10	7	5	3,3	
9	6,3	4,5	3	
8	5,4	4	2,7	
7	4,9	3,5	2,3	
6	4,2	3	2	
5	3,5	2,5	1,7	
4	2,8	2	1,3	
3	2,1	1,5	1	
2	1,4	1	0,7	
1	0,7	0,5	0,3	
	i=10	i=7	i=5	i=3

Motor is reversible.

ATTITUDE

The motor can be operated in all positions.

Maximum temperature +20°C to +80°C

(-4°F to -176°F).

Maximum radial load: 930 N

Maximum axial load: 1080 N

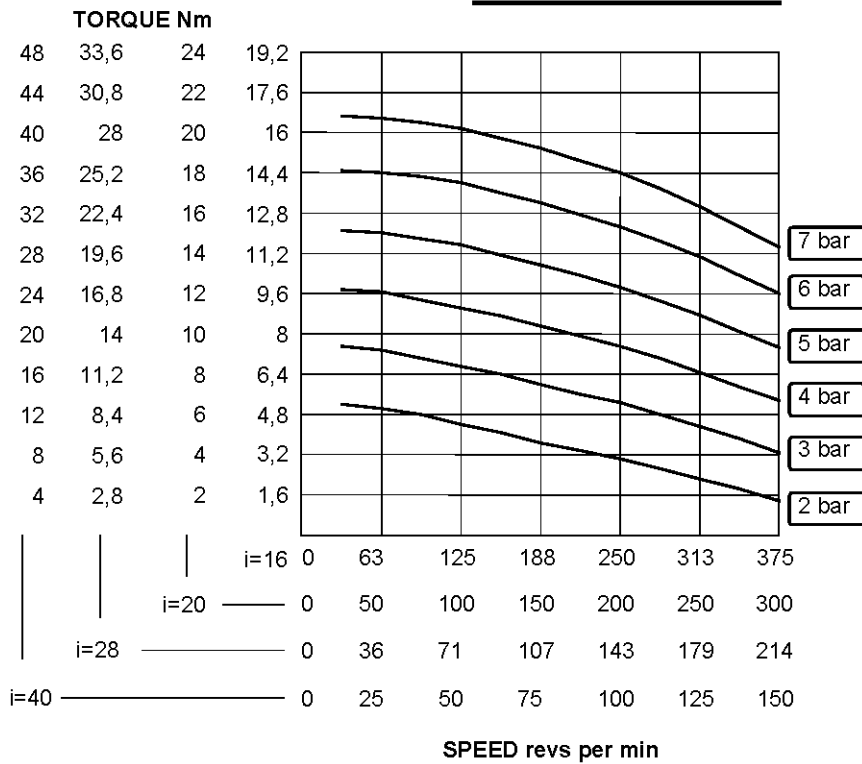
AIRLINE FILTRATION AND LUBRICATION

Use 64 micron filtration or better. Choose a lubricator suitable for the flow required. Prior to initial start-up, inject oil into the inlet port.

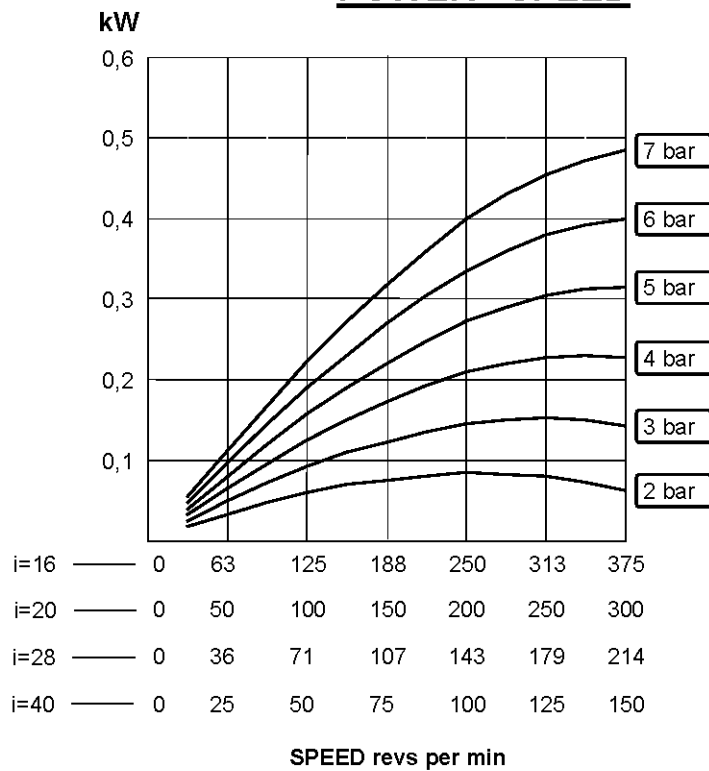
Lubricator drop rate 4-5 drops/minute continuous operation

Lubricator drop rate 9-12 drops/minute intermittent operation

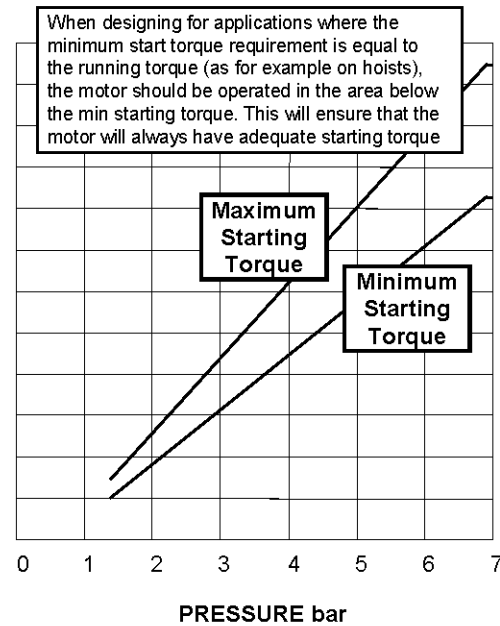
TORQUE - SPEED



POWER - SPEED



TORQUE - PRESSURE



STARTING TORQUE will vary between the minimum and maximum levels shown. The actual starting torque will depend on the air inlet pressure and the motor crank position.

TORQUE Nm			
48	33,6	24	19,2
44	30,8	22	17,6
40	28	20	16
36	25,2	18	14,4
32	22,4	16	12,8
28	19,6	14	11,2
24	16,8	12	9,6
20	14	10	8
16	11,2	8	6,4
12	8,4	6	4,8
8	5,6	4	3,2
4	2,8	2	1,6
i=40	i=28	i=20	i=16

Motor is reversible.

ATTITUDE

The motor can be operated in all positions.

Maximum temperature +20°C to +80°C

(-4°F to -176°F).

Maximum radial load: 930 N

Maximum axial load: 1080 N

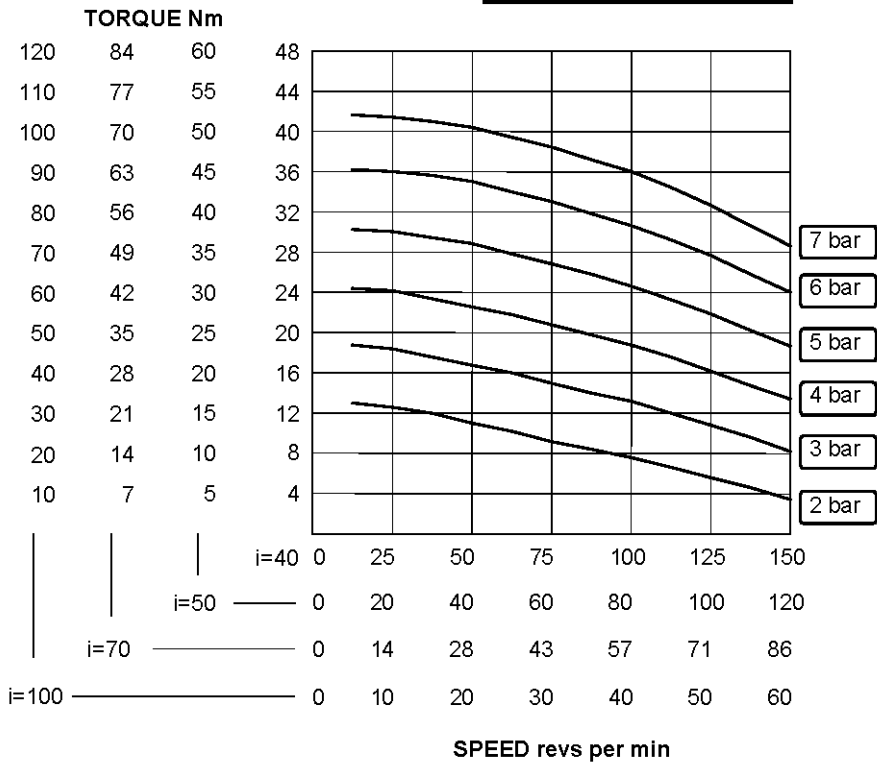
AIRLINE FILTRATION AND LUBRICATION

Use 64 micron filtration or better. Choose a lubricator suitable for the flow required. Prior to initial start-up, inject oil into the inlet port.

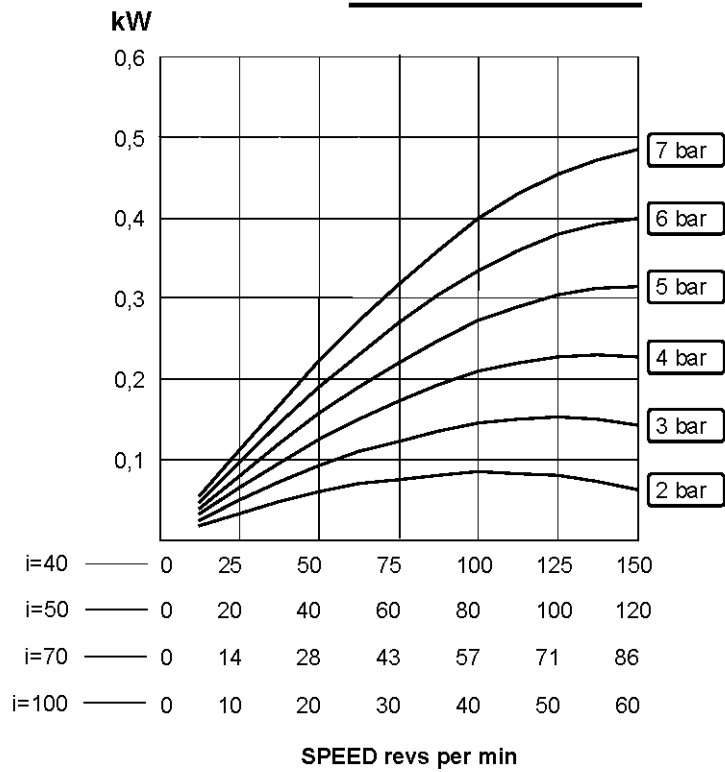
Lubricator drop rate 4-5 drops/minute continuous operation

Lubricator drop rate 9-12 drops/minute intermittent operation

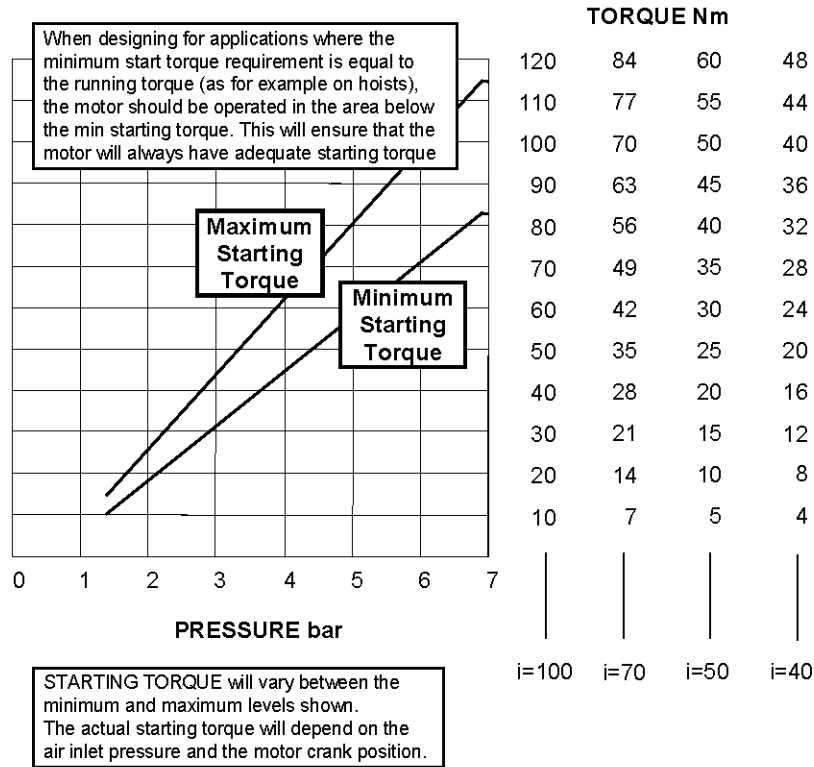
TORQUE - SPEED



POWER - SPEED



TORQUE - PRESSURE



Motor is reversible.

ATTITUDE

The motor can be operated in all positions.

Maximum temperature +20°C to +80°C

(-4°F to -176°F).

Maximum radial load: 1770 N

Maximum axial load: 2180 N

AIRLINE FILTRATION AND LUBRICATION

Use 64 micron filtration or better. Choose a lubricator suitable for the flow required. Prior to initial start-up, inject oil into the inlet port.

Lubricator drop rate 4-5 drops/minute continuous operation

Lubricator drop rate 9-12 drops/minute intermittent operation