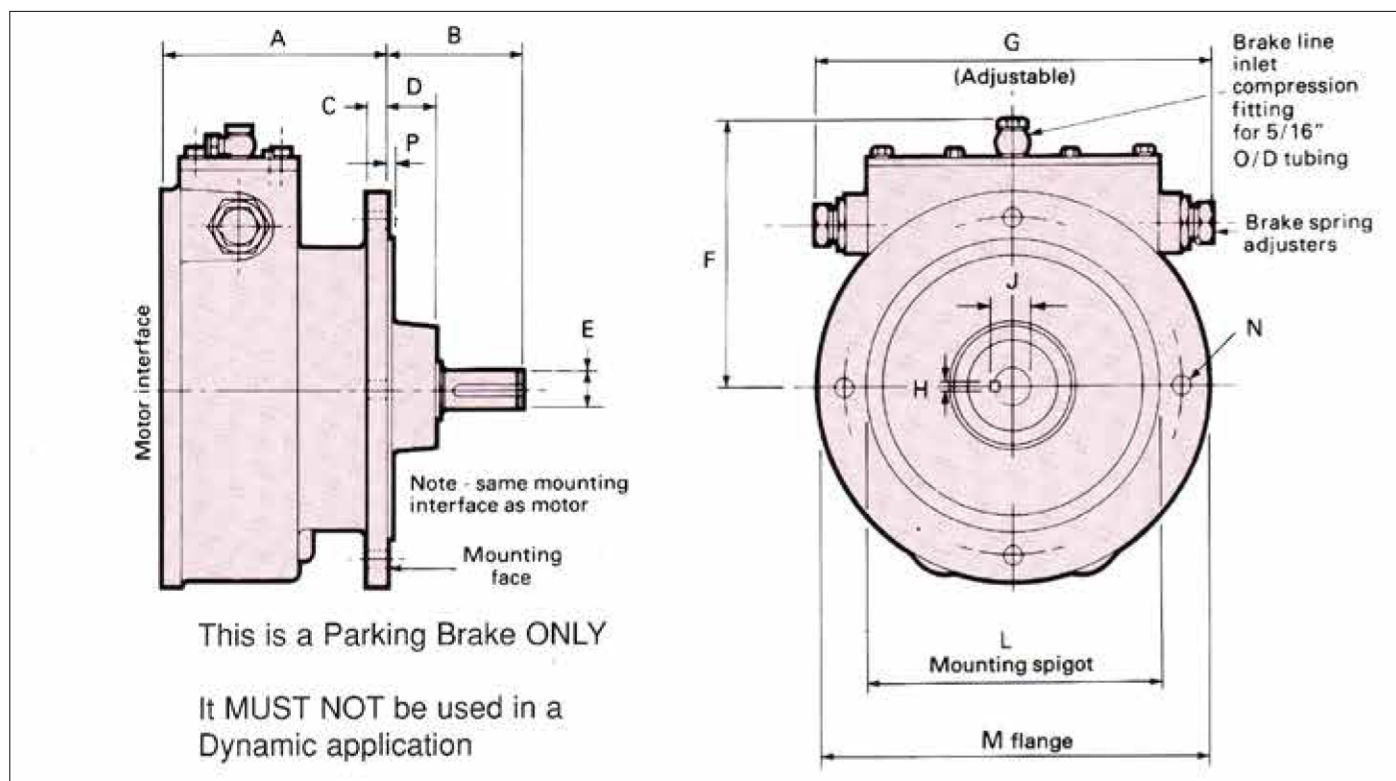


## BRAKE INSTALLATION DETAILS

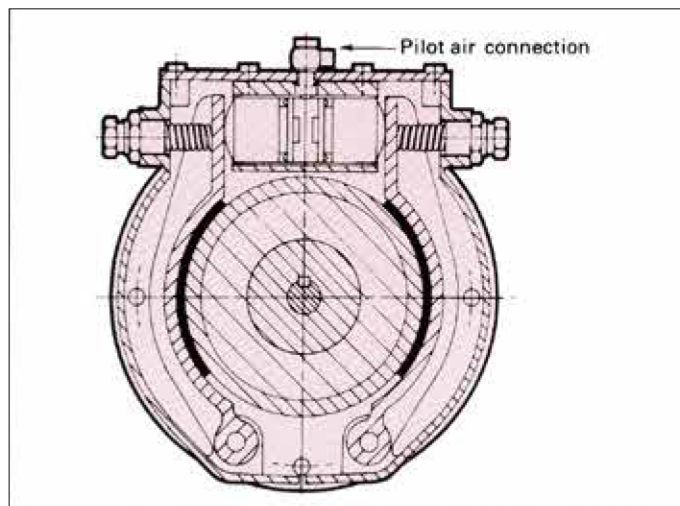
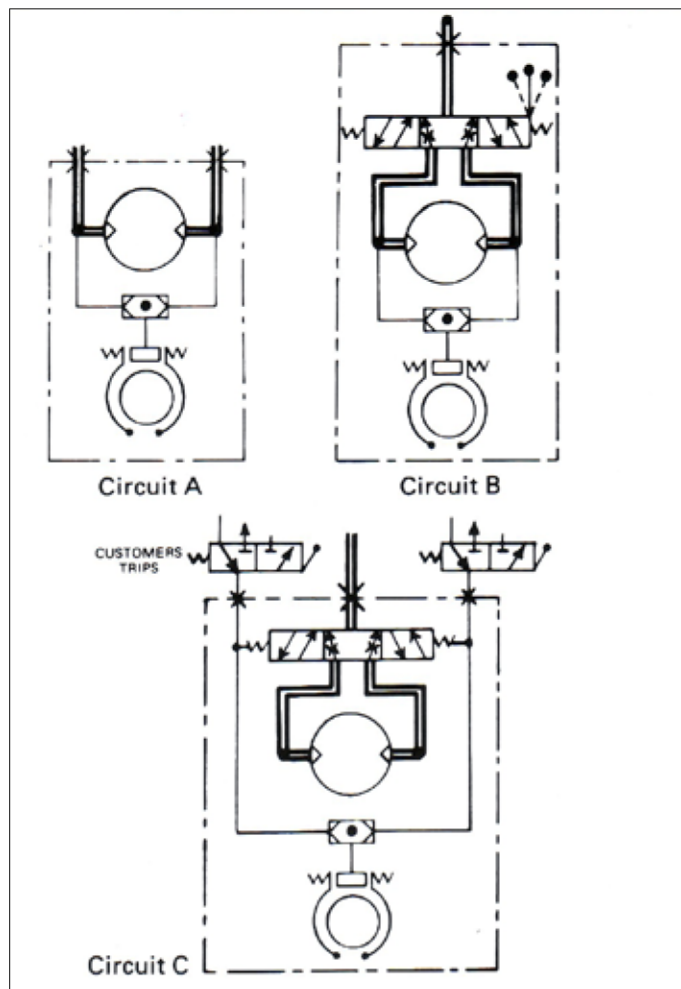
The brake module bolts directly into the motor mounting face and has exactly the same interface as the motor.

As shown on the drawing below, the brake consists of two spring applied shoes pressed against a central hub. These shoes are released by applying air pressure to the cylinder/piston assembly. The brake torque can be varied

by means of two spring adjusters but it is normally set that a pilot pressure of 4.1 (60 p.s.i.) will fully release it. Pressures below this level will progressively reduce the braking torque available. The brakes are set at the plant but it may be necessary to make adjustments on site to suit the individual application.



Motors	A	B	C	D	E	F	G	P
<b>050</b>	100	66	8	30	14,01 14,00	126	210	3,6
<b>110</b>	100	66	8	30	14,01 14,00	126	210	3,6
<b>210</b>	115	93	11	46	19,01 18,99	129	235	4,0
<b>310</b>	140	104	15	46	22,01 21,99	160	270	4,0
<b>410</b>	175	104	16	37	28,01 28,00	206	340	4,0
<b>510</b>	172	96	16	16	35,02 35,00	268	450	5,1
<b>610</b>	172	96	16	16	35,02 35,00	268	450	5,1



**CIRCUIT (A)** - Applies to braked motors supplied without control valving. The unit will be fitted with a shuttle valve to allow brake operation for dual rotation.

**CIRCUIT (B)** - Units supplied with hand (HCV) controlled reversible valves. If trips are required they must be of the mechanical style (costumers supply).

**CIRCUIT (C)** - Units supplied with remotely controlled valves. When override trips are required, they must be superimposed in the signal line close to the motor unit and be of the 3 way style. (Signal lines cut and exhausted in the tripped position).

H	J	L	M	N-MOUNTING HOLES			
				NO.	Ø	P.C.D.	BOLT LENGHT (MAX)
5,00	16,00	130,00	188	4	11	165	28
4,97	15,87	129,94					
5,00	16,00	130,00	188	4	11	165	28
4,97	15,87	129,94					
6,00	21,50	180,00	254	4	14	215	25
5,97	21,27	179,94					
8,00	31,01	230,00	305	4	14	265	40
7,94	37,71	229,93					
10,00	38,00	310,00	385	5	18	350	35
9,96	37,71	309,92					
10,00	38,00	310,00	385	5	18	350	35
9,96	37,71	309,92					