



GLOBE AIRMOTORS B.V.



GLOBE LUBE FREE VANE AIR MOTORS

As alternative for the traditional lubricated air motors GLOBE has developed the oil free NL-series.

The GLOBE lube free air motors are of the vane type. They generate high torques and low speeds of rotation required in many applications. Power ranges from 0,3 kW up to 7,5 kW at 6 bar air pressure.

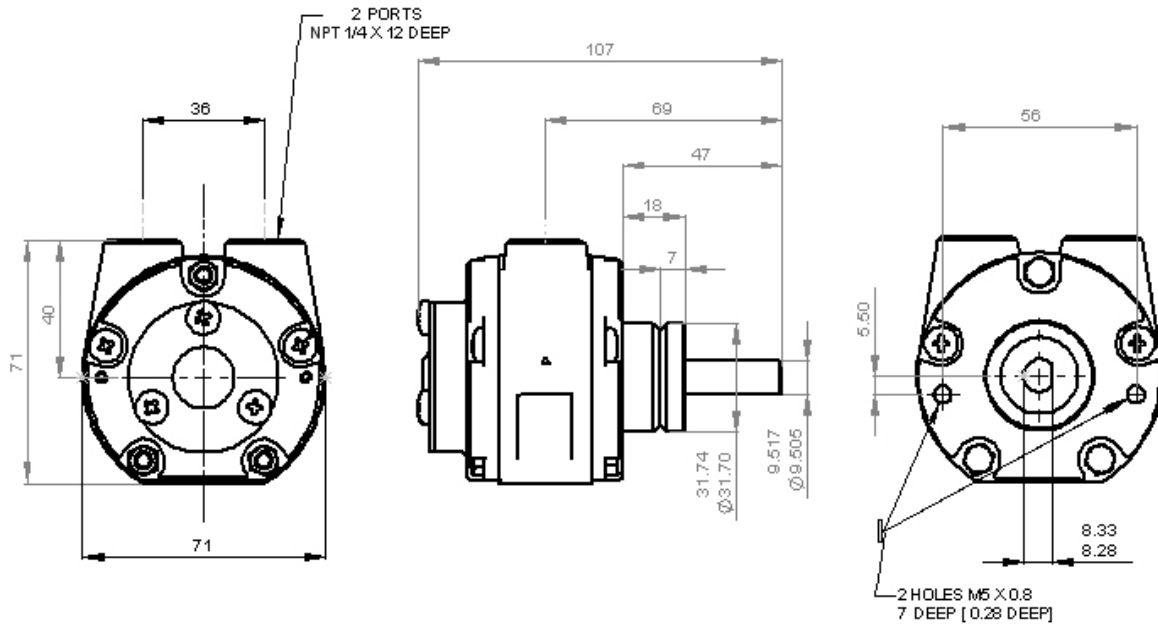
The GLOBE NL-series have the same advantages as the lubricated air motors:

- No airline lubrication
- Power up to 7,5 kW at 6 bar air pressure
- Easily variable and controllable speed and torque
- Perfect for applications in hazardous and aggressive environments
- ATEX certification ATEX II cat. 2 G&D T5 on request
- No damage by overload or repeated starting
- Can be used in stall conditions
- Superior power to weight ratio
- Instantly reversible
- Minimum maintenance

For applications where contaminated exhaust cannot be tolerated GLOBE NL series provide the solution. Because no oil is needed for lubrication the expenses of a lubricator and oil are saved.



VA1-NL Vane Air Motor



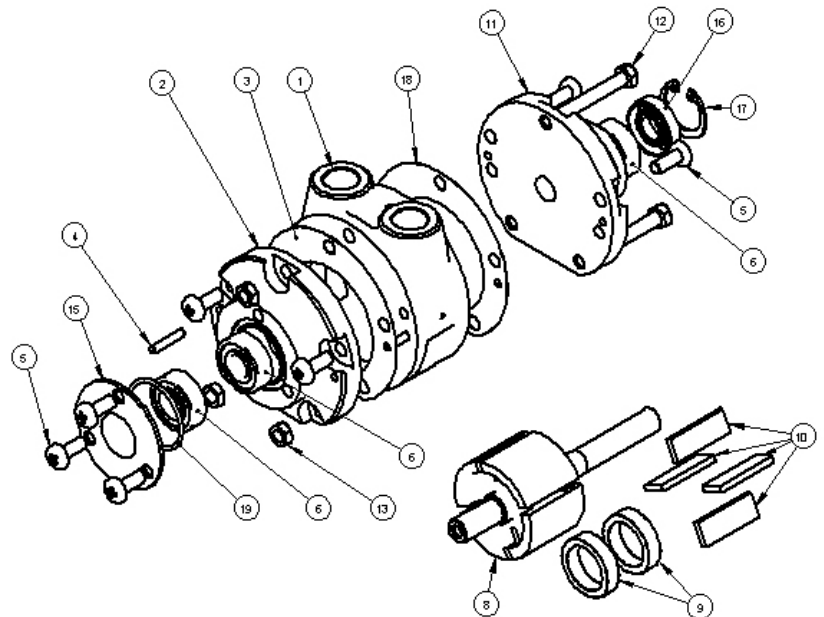
Attitude: The motor can be operated in all positions.
Maximum temperature -20°C to +60°C

Max. Overhung Force on shaft 18 N (4.0 lbf.).
Axial loads should be kept to a minimum.

Mass 1.3 kg

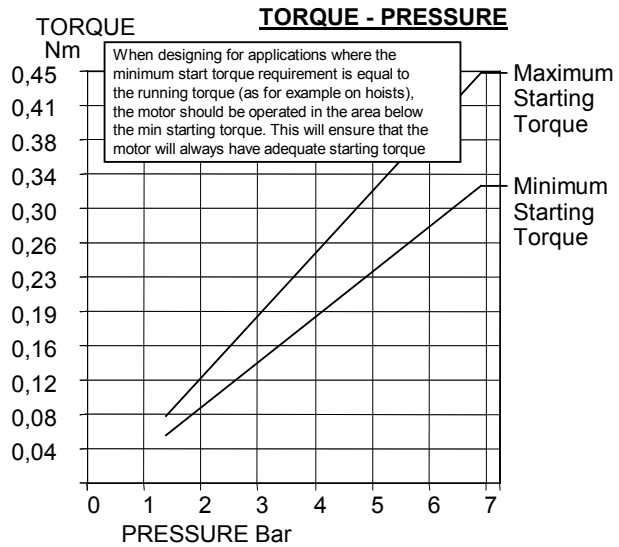
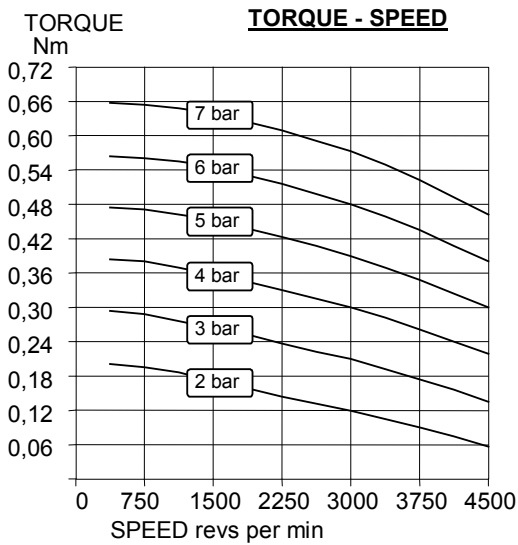
Exploded view with spare parts list

Item	Part No.	Description	Qty	Kit No.
01	710-001	Body NPT	1	
02	710-002	Rear Cover	1	
03		Gasket	1	719-915
04	806-009	Dowel Pin	4	
05	805-050	Screw	7	
06	807-053	Bearing	3	
08	710-911	Rotor Shaft	1	
09	710-006	Ejection Ring	2	
10		Blade	4	719-915
11	710-003	Front Cover	1	
12	802-700	Bolt M5 x 40	3	
13	801-700	Nut M5	3	
15	710-008	End Plate	1	
16		Shaft Seal	1	719-915
17		Circlip	1	719-915
18		Gasket	1	719-915
19		O-ring	1	719-915

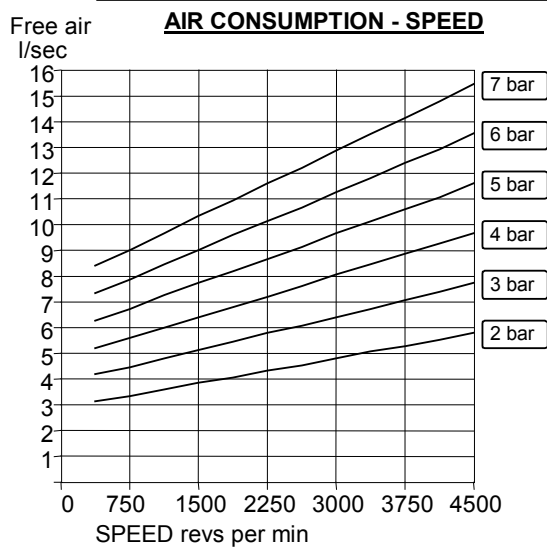
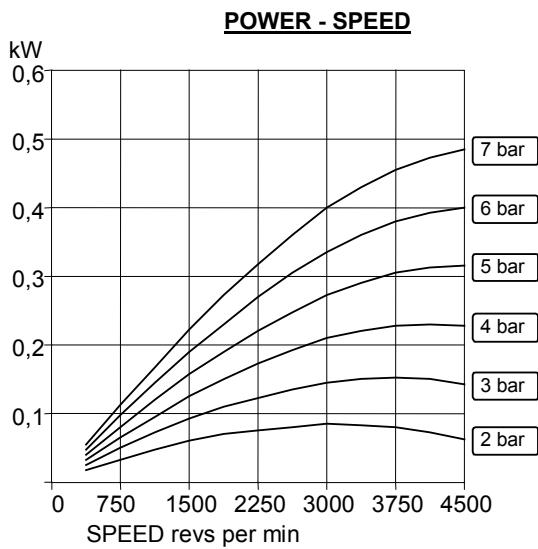




Performances VA1X-NL



A pressure regulator should be used to control the air pressure to the motor, to limit the maximum output torque applied to the driven assembly.



Muffler supplied with motor.
Motor is reversible.
Attitude: The motor can be operated in all positions.
Maximum temperature -20°C to +60°C

Max. Overhung Force on motor shaft 18 N (4.0 lbf.).
Axial loads should be kept to a minimum.

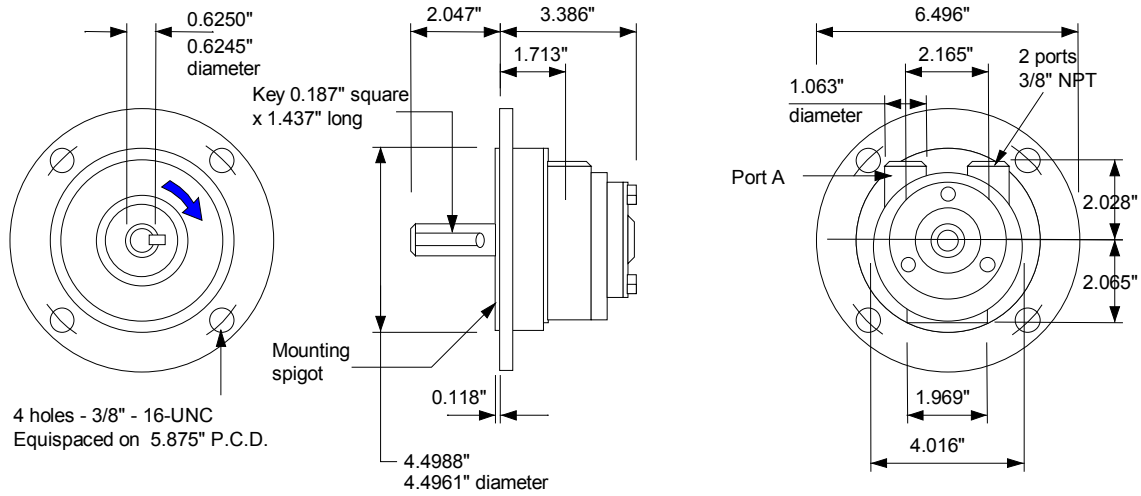
AIRLINE FILTRATION

Use 64 micron filtration or better.
Use dry air. Advised to use air with set dew point 20 degrees Celsius below ambient temperature.

Maximum continuous speed 4500 rpm



VA2C-NL Vane Air Motor



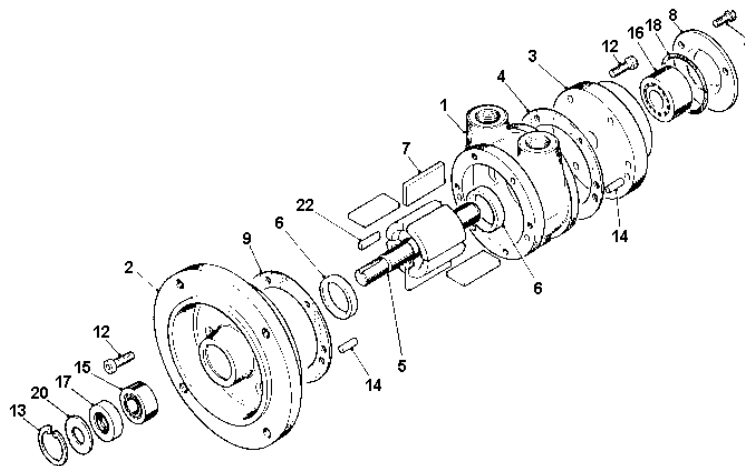
Attitude: The motor can be operated in all positions
Maximum temperature -20°C to +60°C
Muffler supplied with motor

Max. Overhung Force on shaft 400 N (90 lbf.)
Axial loads should be kept to a minimum
Mass 4.40 kg (9.70 lb.)

**Note: With air inlet at port 'A',
rotation is clockwise looking on shaft.
For opposite rotation reverse
Motor is reversible**

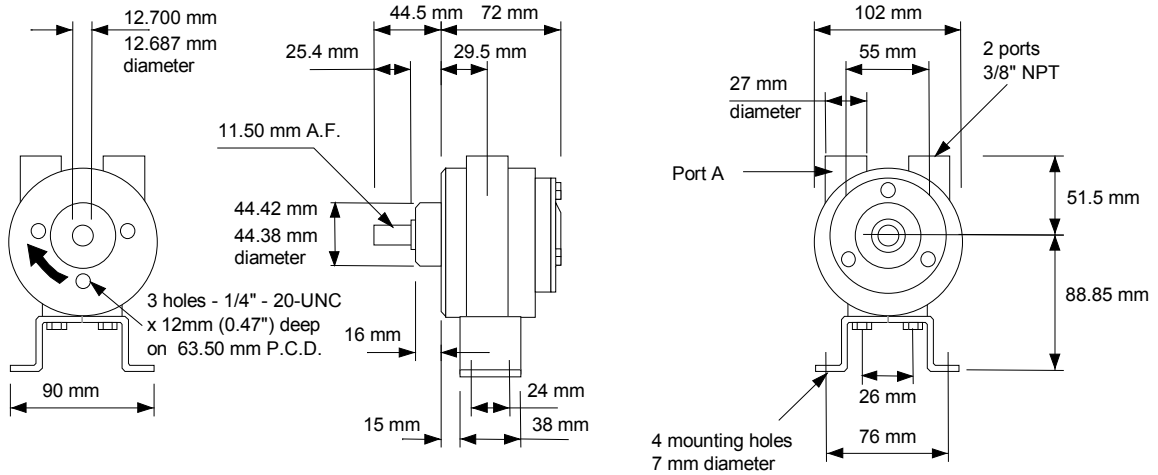
Exploded view with spare parts list

Item	Part No.	Description	Qty	Kit No.
01	720-001	BSP Body	1	
02	740-518	Front Plate NEMA 56C	1	
03	740-002	End Plate	1	
04	-	Gasket	2	729-915
05	720-910	Rotor Shaft Assy	1	
06	720-006	Ejection Ring	2	729-915
07	-	Blades	4	729-915
08	740-008	Cover Plate	1	
09-1	-	Gasket	1	729-915
09-2	-	Gasket	1	729-915
09-3	-	Gasket	1	729-915
11	802-001	Screw	3	
12	809-007	Cap Screw	12	
13	-	Circlip	1	729-915
14	806-024	Dowel	4	
15	807-025	Bearing	1	
16	807-028	Bearing	1	
17	-	Oil Seal	1	729-915
18	-	O Ring	1	729-915
20	720-100	Seal Bearing Ring	1	
22	811-020	Key	1	
	729-915	V2 Seal Kit		
	820-023	Silencer 3/8 BSP	1	





VA2J&X-NL Vane Air Motor



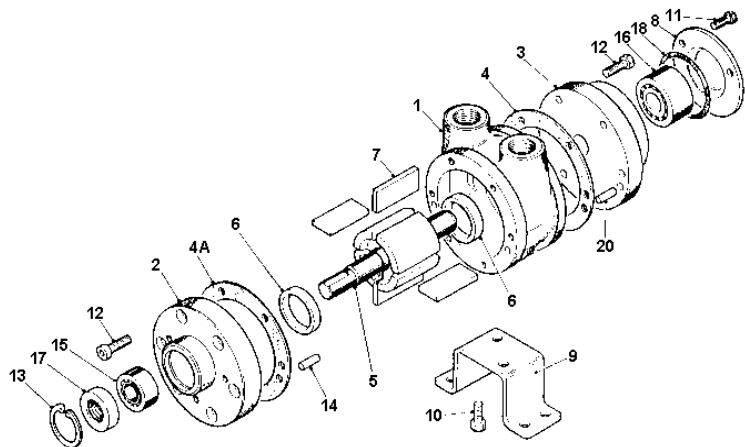
Attitude: The motor can be operated in all positions
 Maximum temperature -20°C to +60°C
 Muffler supplied with motor

Max. Overhung Force on shaft 400 N (90 lbf.)
 Axial loads should be kept to a minimum
 Mass 3.30 kg

Note: With air inlet at port 'A', rotation is clockwise looking on shaft. For opposite rotation reverse ports.

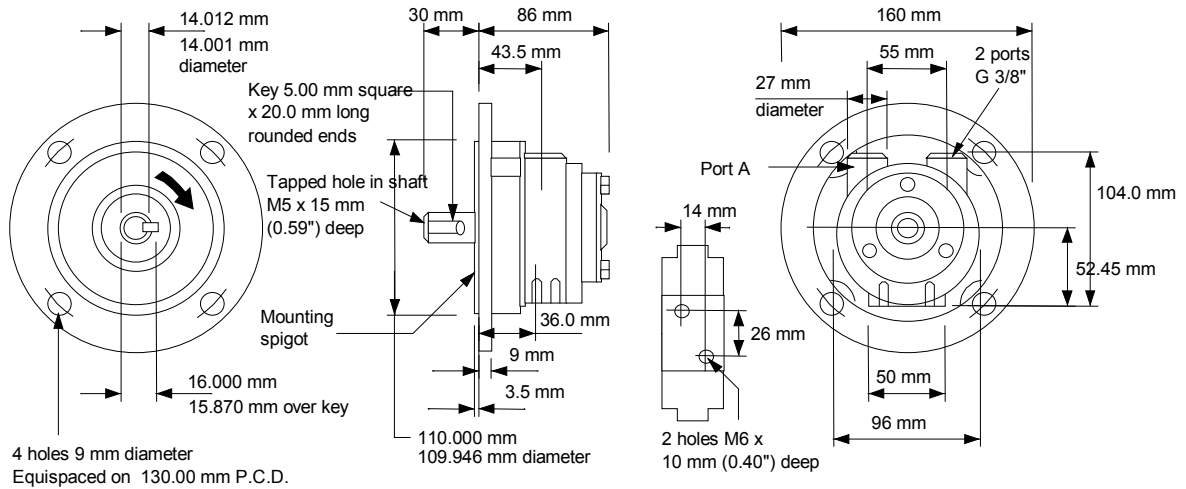
Exploded view with spare parts list

Item	Part No.	Description	Qty	Kit No.
01	720-001	BSP Body	1	
02	740-003	Front Plate	1	
03	740-002	End Plate	1	
04	-	Gasket	2	729-915
04A-1	-	Gasket	1	729-915
04A-2	-	Gasket	1	729-915
04A-3	-	Gasket	1	729-915
05	720-911	Rotor Shaft Assy	1	
06	720-006	Ejection Ring	2	
07	-	Blades	4	729-915
08	740-008	Cover Plate	1	
09	720-023	Foot	1	
10	802-011	Screw	2	
12	809-007	Cap Screw	12	
13	-	Circlip	1	729-915
14	806-024	Dowel	4	
15	807-027	Bearing	1	
16	807-028	Bearing	1	
17	-	Oil Seal	1	729-915
18	-	O Ring	1	729-915
20	806-032	Dowel	2	
	729-915	V2 Seal Kit		
	820-023	Silencer 3/8 BSP	1	





VS2C-NL Vane Air Motor



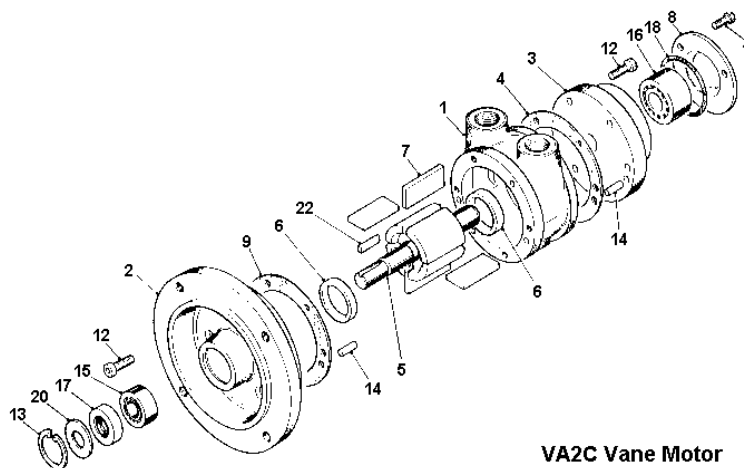
Attitude: The motor can be operated in all positions
 Maximum temperature -20°C to +60°C
 Muffler supplied with motor

Max. Overhung Force on shaft 400 N (90 lbf.)
 Axial loads should be kept to a minimum
 Mass 4.40 kg

Note: With air inlet at port 'A', rotation is clockwise looking on shaft. For opposite rotation reverse ports.

Exploded view with spare parts list

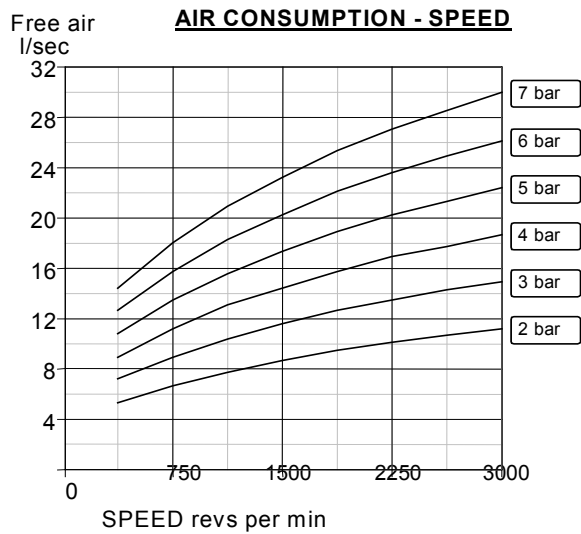
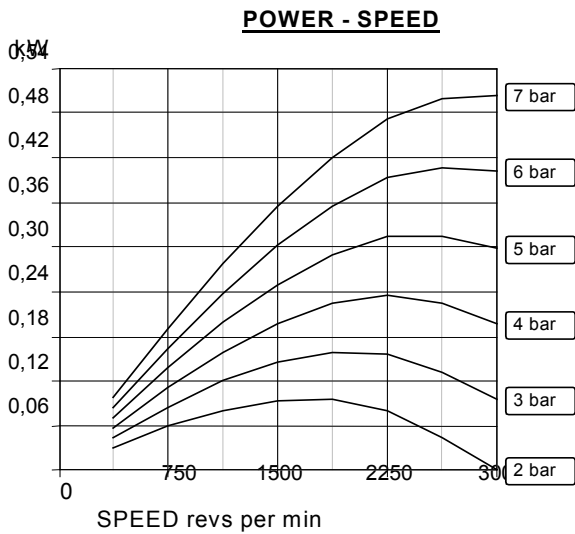
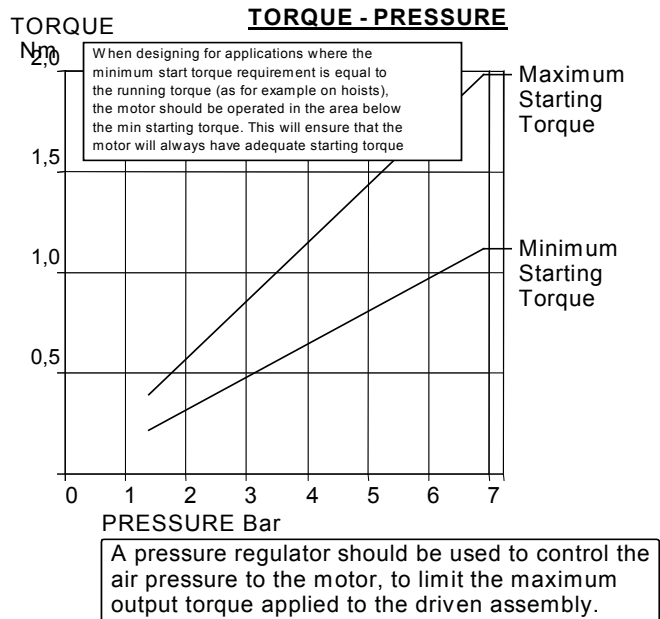
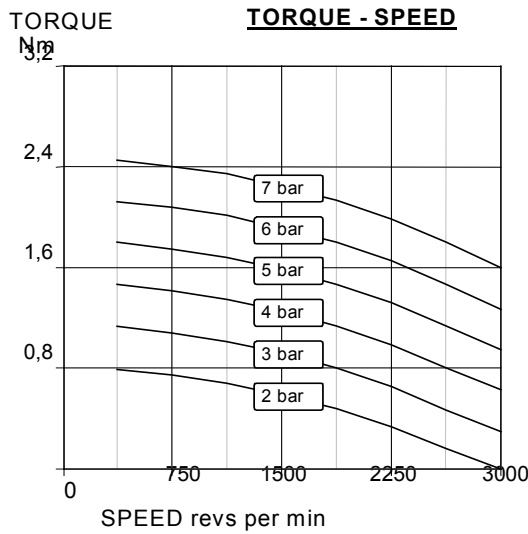
Item	Part No.	Description	Qty	Kit No.
01	720-101	BSP Body	1	
02	740-535	Front Plate D71	1	
03	740-002	End Plate	1	
04	-	Gasket	2	729-910
05	720-920	Rotor Shaft Assy	1	
06	720-006	Ejection Ring	2	
07	-	Blades	4	729-910
08	740-008	Cover Plate	1	
09-1	-	Gasket	1	729-915
09-2	-	Gasket	1	729-910
09-3	-	Gasket	1	729-910
11	802-001	Screw	3	
12	809-007	Cap Screw	12	
13	-	Circlip	1	729-910
14	806-024	Dowel	4	
15	807-025	Bearing	1	
16	807-028	Bearing	1	
17	-	Oil Seal	1	729-910
18	-	O Ring	1	729-910
20	720-100	Seal Bearing Ring	1	
22	811-027	Key	1	
	729-910	V2 Seal Kit		
	820-003	Silencer 3/8 BSP	1	



VA2C Vane Motor



Performances VA2C-NL VA2J&X-NL VS2C-NL



Muffler supplied with motor.
Motor is reversible.

Attitude: The motor can be operated in all positions.
Maximum temperature -20°C to +60°C

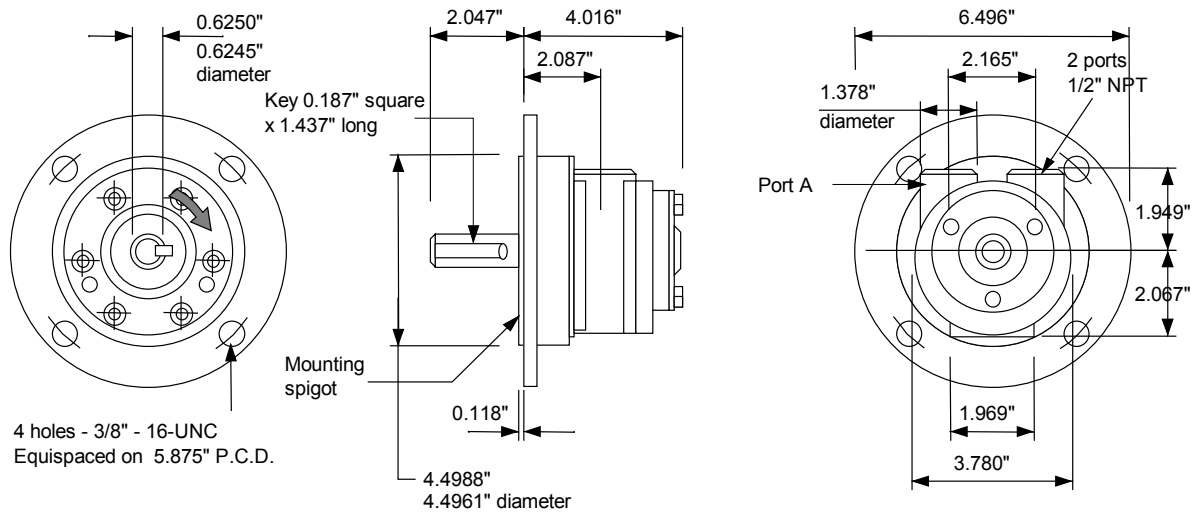
AIRLINE FILTRATION

Use 64 micron filtration or better.
Use dry air. Advised to use air with set dew point 20 degrees Celsius below ambient temperature.

Maximum continuous speed 3000 rpm



VA4C-NL Vane Air Motor



Attitude: The motor can be operated in all positions.
Maximum temperature -20°C to +60°C
Muffler supplied with motor.

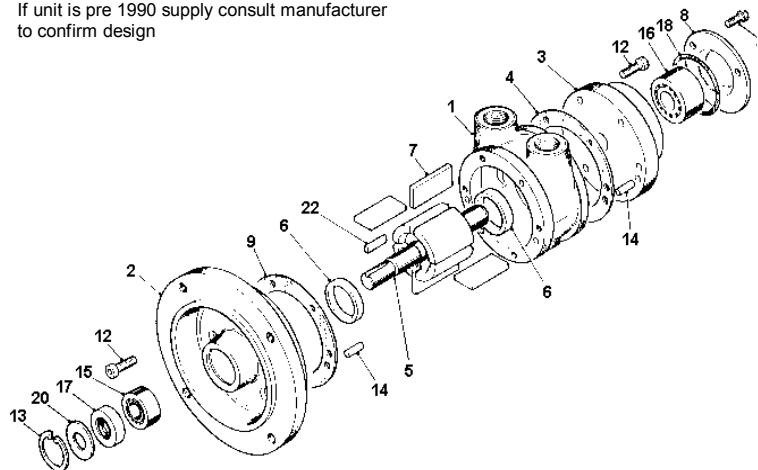
Max. Overhung Force on shaft 170 N (40 lbf.).
Axial loads should be kept to a minimum.
Mass 5.00 kg (11 lb.)

**Note: With air inlet at port 'A',
rotation is clockwise looking on shaft.
For opposite rotation reverse ports.**

Exploded view with spare parts list

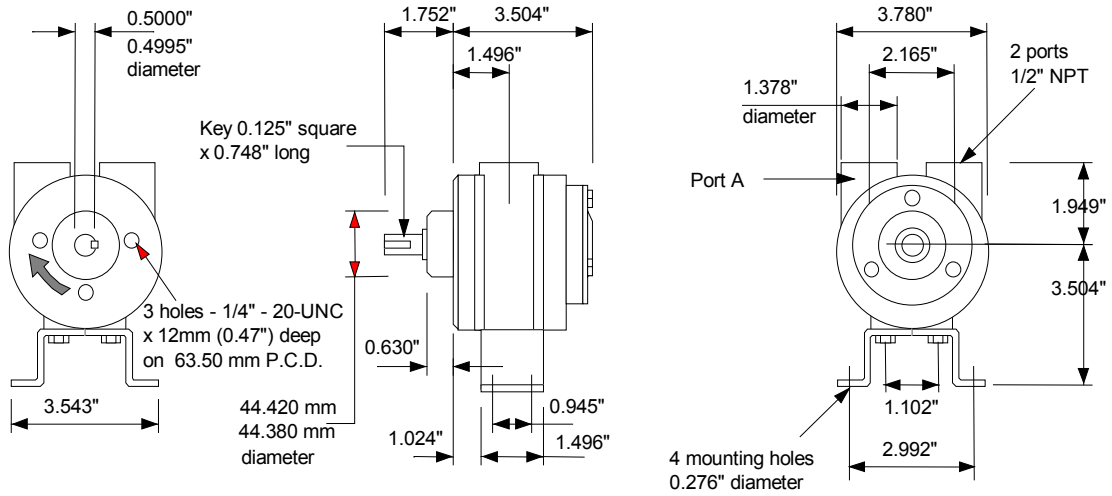
Item	Part No.	Description	Qty	Kit No.
01	740-001	BSP Body	1	
02	740-518	Front Plate NEMA	1	
03	740-002	End Plate	1	
04	-	Gasket	2	749-915
05	740-910	Rotor Shaft Assy	1	
06	740-006	Ejection Ring	2	
07	-	Blades	4	749-915
08	740-008	Cover Plate	1	
09-1	-	Gasket	1	749-915
09-2	-	Gasket	1	749-915
09-3	-	Gasket	1	749-915
11	802-001	Screw	3	
12	809-007	Cap Screw	12	
13	-	Circlip	1	749-915
14	806-024	Dowel	4	
15	807-025	Bearing	1	
16	807-028	Bearing	1	
17	-	Oil Seal	1	749-915
18	-	O Ring	1	749-915
20	720-100	Seal Backing Ring	1	
22	811-020	Key	1	
	749-915	V4 Seal Kit		
	820-024	Silencer 1/2 BSP	1	

If unit is pre 1990 supply consult manufacturer to confirm design





VA4J&X-NL Vane Air Motor



Attitude: The motor can be operated in all positions.
 Maximum temperature -20°C to +60°C
 Muffler supplied with motor.

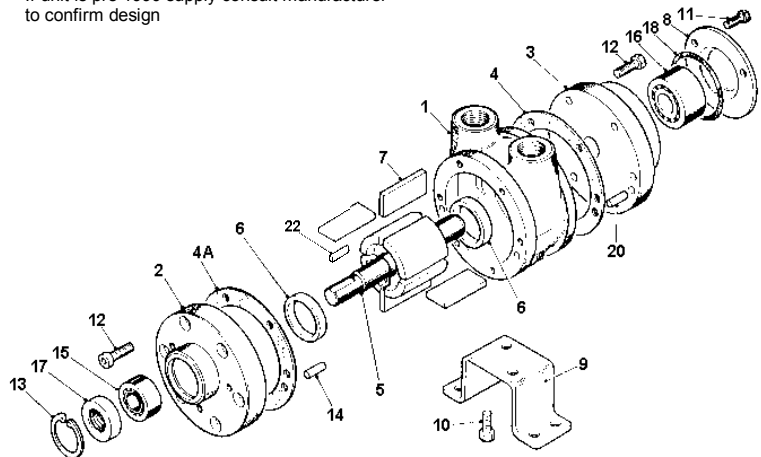
Max. Overhung Force on shaft 170 N (40 lbf.).
 Axial loads should be kept to a minimum.
 Mass 3.80 kg (8.38 lb.).

**Note: With air inlet at port 'A',
 rotation is clockwise looking on shaft.
 For opposite rotation reverse ports.**

Exploded view with spare parts list

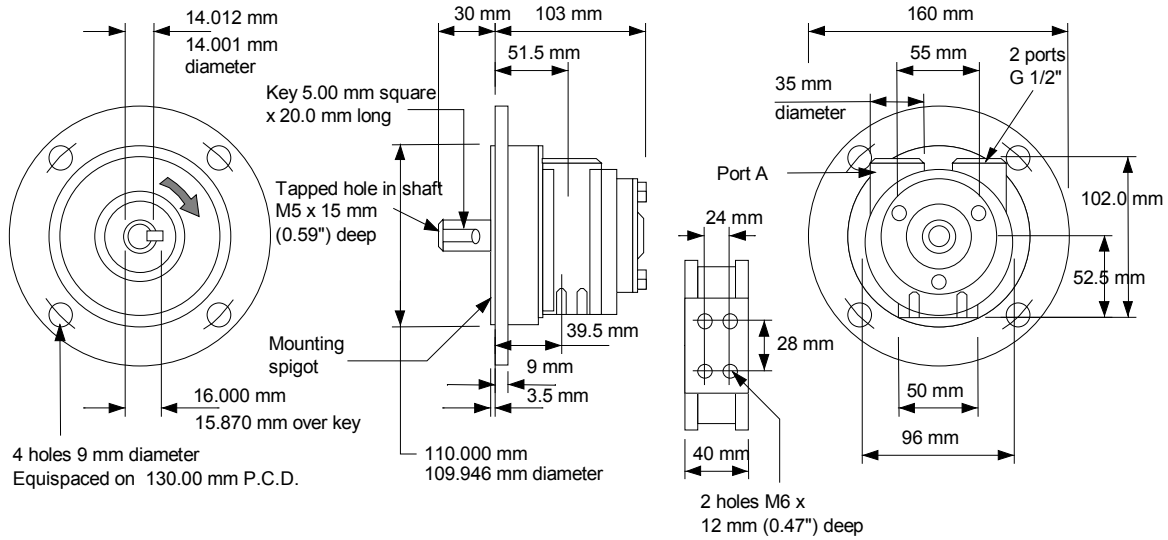
Item	Part No.	Description	Qty	Kit No.
01	740-001	Body BSP	1	
02	740-003	Front Plate	1	
03	740-002	End Plate	1	
04	-	Gasket	2	749-915
04A-1	-	Gasket	1	749-915
04A-2	-	Gasket	1	749-915
04A-3	-	Gasket	1	749-915
05	740-911	Rotor Shaft Assy	1	
06	740-006	Ejection Ring	2	
07	-	Blades	4	749-915
08	740-008	Cover Plate	1	
09	740-023	Foot	1	
10	802-011	Screw	4	
11	802-001	Screw	3	
12	809-007	Cap Screw	12	
13	-	Circlip	1	749-915
14	806-024	Dowel	2	
15	807-027	Bearing	1	
16	807-028	Bearing	1	
17	-	Oil Seal	1	749-915
18	-	O Ring	1	749-915
20	806-032	Dowel	2	
22	811-023	Key	1	
	749-915	V4 Seal Kit		
	820-024	Silencer 1/2 BSP	1	

If unit is pre 1990 supply consult manufacturer to confirm design





VS4C-NL Vane Air Motor



Attitude: The motor can be operated in all positions.
 Maximum temperature -20°C to +60°C
 Muffler supplied with motor.

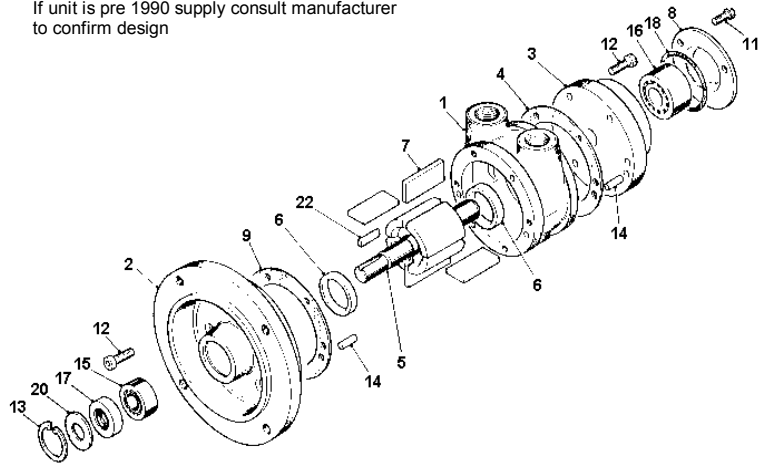
Max. Overhung Force on shaft 170 N (40 lbf.).
 Axial loads should be kept to a minimum.
 Mass 5.00 kg

**Note: With air inlet at port 'A',
 rotation is clockwise looking on shaft.
 For opposite rotation reverse ports.**

Exploded view with spare parts list

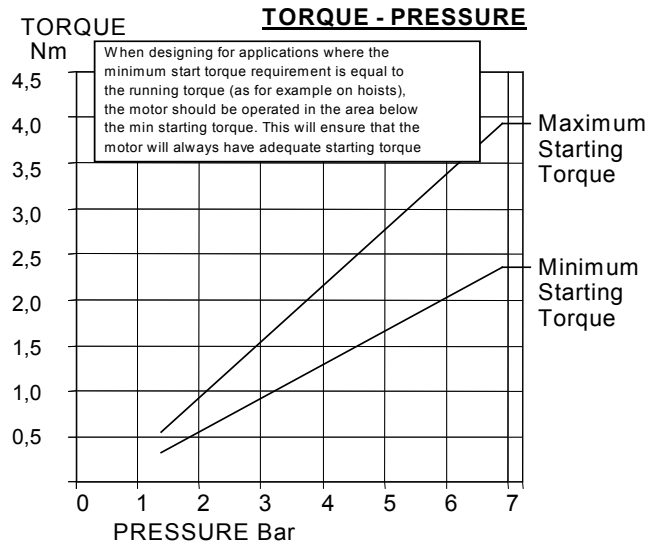
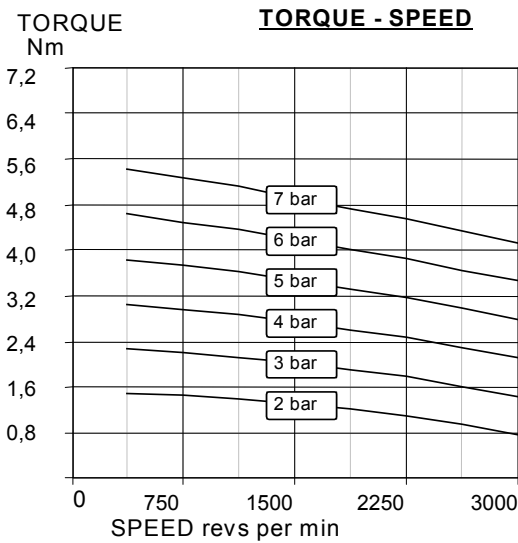
Item	Part No.	Description	Qty	Kit No.
01	740-101	Body BSP	1	
02	740-535	Front Plate D71	1	
03	740-002	End Plate	1	
04	-	Gasket	2	749-915
05	740-920	Rotor Shaft Assy	1	
06	740-006	Ejection Ring	2	
07	-	Blades	4	749-915
08	740-008	Cover Plate	1	
09-1	-	Gasket	1	749-915
09-2	-	Gasket	1	749-915
09-3	-	Gasket	1	749-915
11	802-001	Screw	3	
12	809-007	Cap Screw	12	
13	-	Circlip	1	749-915
14	806-024	Dowel	4	
15	807-025	Bearing	1	
16	807-028	Bearing	1	
17	-	Oil Seal	1	749-915
18	-	O Ring	1	749-915
20	720-100	Seal Backing Ring	1	
22	811-027	Key	1	
	749-915	V4 Seal Kit		
	820-004	Silencer 1/2 BSP	1	

If unit is pre 1990 supply consult manufacturer to confirm design

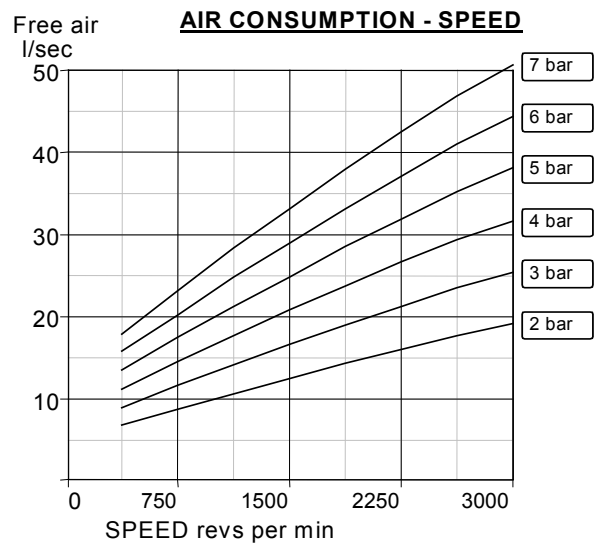
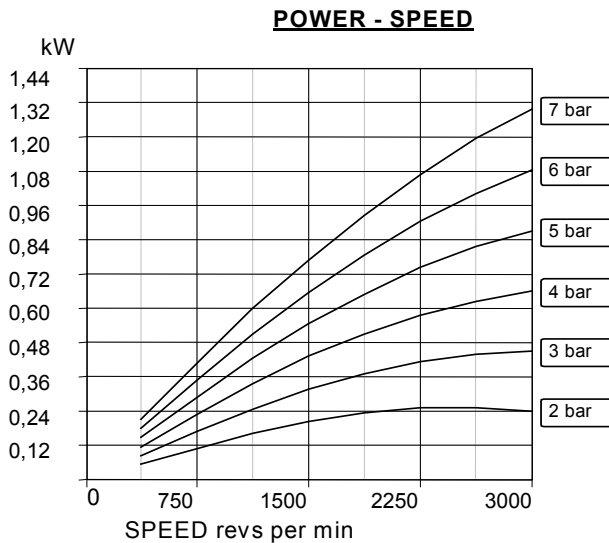




PERFORMANCES VA4C-NL VA4J&X-NL VS4C-NL



A pressure regulator should be used to control the air pressure to the motor, to limit the maximum output torque applied to the driven assembly.



Muffler supplied with motor.
 Motor is reversible.
 Attitude: The motor can be operated in all positions.
 Maximum temperature -20°C to +60°C

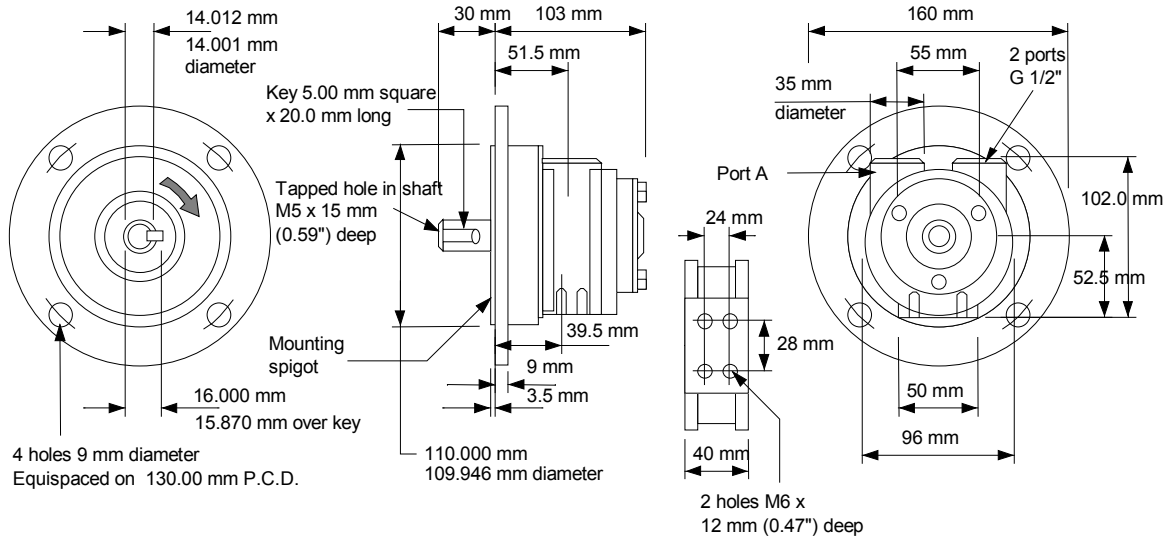
AIRLINE FILTRATION
 Use 64 micron filtration or better.

Use dry air. Advised to use air with set dew point 20 degrees Celsius below ambient temperature.

Maximum continuous speed 3000 rpm



VA6C-NL Vane Air Motor



Attitude: The motor can be operated in all positions.
 Maximum temperature -20°C to +60°C
 Muffler supplied with motor.

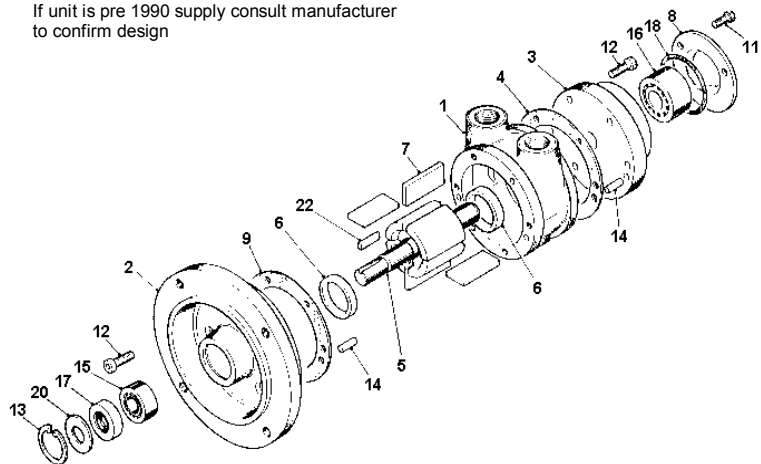
Max. Overhung Force on shaft 170 N (40 lbf.).
 Axial loads should be kept to a minimum.
 Mass 5.00 kg

**Note: With air inlet at port 'A',
 rotation is clockwise looking on shaft.
 For opposite rotation reverse ports.**

Exploded view with spare parts list

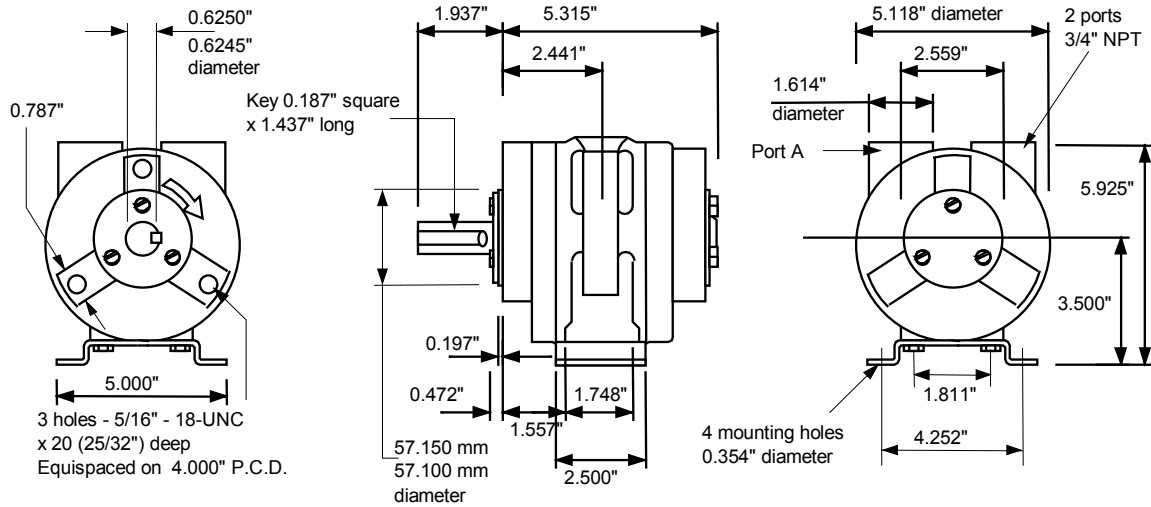
Item	Part No.	Description	Qty	Kit No.
01	740-101	Body BSP	1	
02	740-535	Front Plate D71	1	
03	740-002	End Plate	1	
04	-	Gasket	2	749-915
05	740-920	Rotor Shaft Assy	1	
06	740-006	Ejection Ring	2	
07	-	Blades	4	749-915
08	740-008	Cover Plate	1	
09-1	-	Gasket	1	749-915
09-2	-	Gasket	1	749-915
09-3	-	Gasket	1	749-915
11	802-001	Screw	3	
12	809-007	Cap Screw	12	
13	-	Circlip	1	749-915
14	806-024	Dowel	4	
15	807-025	Bearing	1	
16	807-028	Bearing	1	
17	-	Oil Seal	1	749-915
18	-	O Ring	1	749-915
20	720-100	Seal Backing Ring	1	
22	811-027	Key	1	
	749-915	V4 Seal Kit		
	820-004	Silencer 1/2 BSP	1	

If unit is pre 1990 supply consult manufacturer to confirm design





VA6J&X-NL Vane Air Motor



Attitude: The motor can be operated in all positions.
Maximum temperature -20°C to +60°C
Muffler supplied with motor.

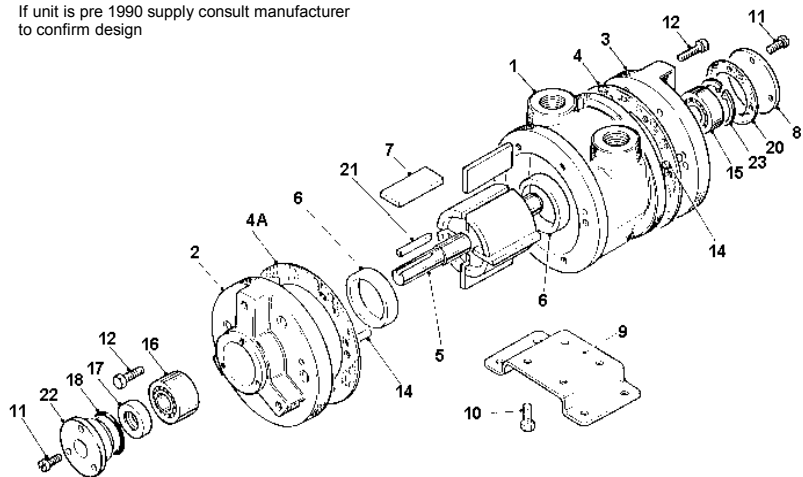
Max. Overhung Force on shaft 300 N (70 lbf.).
Axial loads should be kept to a minimum.
Mass 7.60 kg (16.75 lb.).

**Note: With air inlet at port 'A', rotation is clockwise looking on shaft.
For opposite rotation reverse ports.**

Exploded view with spare parts list

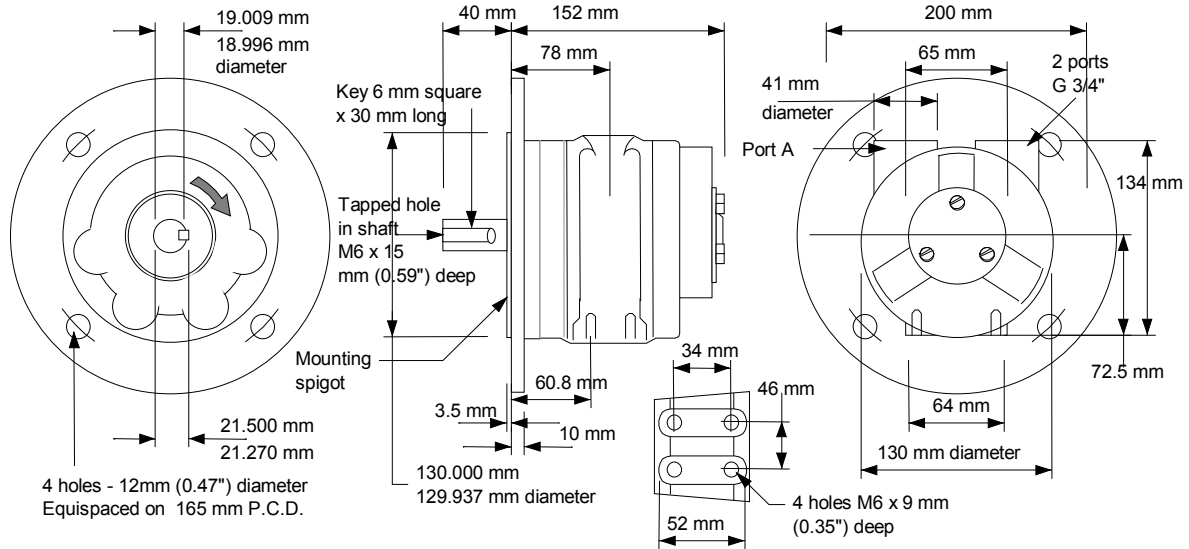
Item	Part No.	Description	Qty	Kit No.
01	760-001	Body BSP	1	
02	760-003	Front Plate	1	
03	760-002	End Plate	1	
04	-	Gasket	2	769-915
04A-1	-	Gasket	1	769-915
04A-2	-	Gasket	1	769-915
04A-3	-	Gasket	1	769-915
05	760-911	Rotor Shaft Assy	1	
06	760-006	Ejection Ring	2	
07	-	Blades	4	769-915
08	760-008	Cover Plate	1	
09	760-023	Foot	1	
10	802-012	Screw	4	
11	805-006	Screw	6	
12	809-009	Cap Screw	12	
14	806-024	Dowel	4	
15	807-025	Bearing	1	
16	807-028	Bearing	1	
17	-	Oil Seal	1	769-915
18	-	O Ring	1	769-915
20	-	Gasket	1	769-915
21	811-020	Key	1	
22	760-007	Seal Housing	1	
23	-	Circlip	1	769-915
	769-915	V6 Seal Kit		
	820-025	Silencer 3/4 BSP	1	

If unit is pre 1990 supply consult manufacturer to confirm design





VS6C-NL Vane Air Motor



Attitude: The motor can be operated in all positions
Maximum temperature -20°C to +60°C
Muffler supplied with motor.

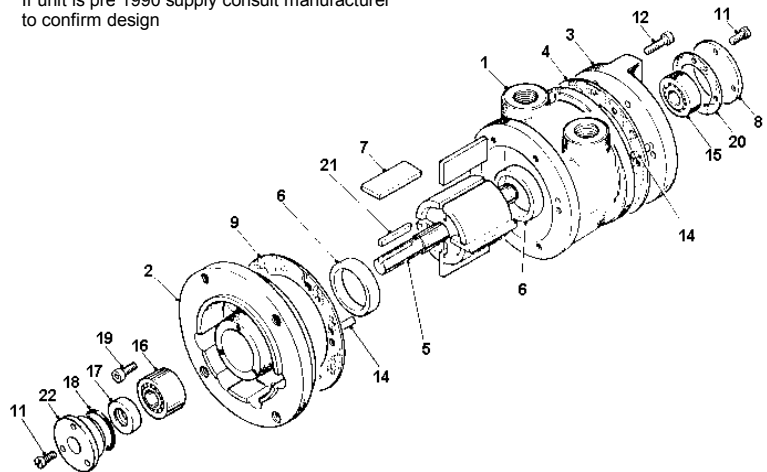
Max. Overhung Force on shaft 300 N (70 lbf.).
Axial loads should be kept to a minimum.
Mass 11.30 kg (24.91 lb.).

Note: With air inlet at port 'A', rotation is clockwise looking on shaft. For opposite rotation reverse ports.

Exploded view with spare parts list

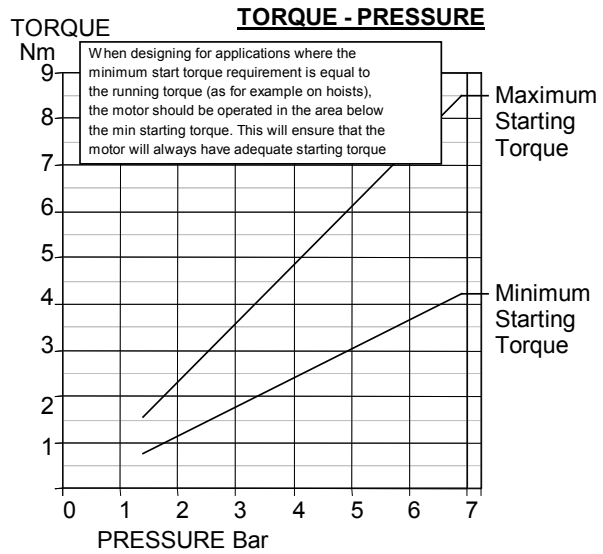
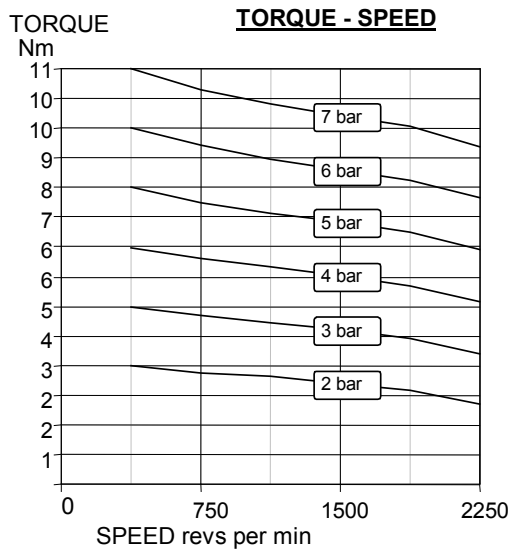
Item	Part No.	Description	Qty	Kit No.
01	760-101	Body	1	
02	760-036	Front Plate D80	1	
03	760-002	End Plate	1	
04	-	Gasket	2	769-915
05	760-921	Rotor Shaft Assy	1	
06	760-006	Ejection Ring	2	
07	-	Blades	4	769-915
08	760-008	Cover Plate	1	
09-1	-	Gasket	1	769-915
09-2	-	Gasket	1	769-915
09-3	-	Gasket	1	769-915
11	805-006	Screw	6	
12	809-009	Cap Screw	6	
14	806-024	Dowel	4	
15	807-025	Bearing	1	
16	807-026	Bearing	1	
17	-	Oil Seal	1	769-915
18	-	O Ring	1	769-915
19	809-007	Capscrew	6	
20	-	Gasket	1	769-915
21	811-001	Key	1	
22	780-007	Seal Housing	1	
	769-915	V6 Seal Kit		
	820-005	Silencer 3/4 BSP	1	

If unit is pre 1990 supply consult manufacturer to confirm design

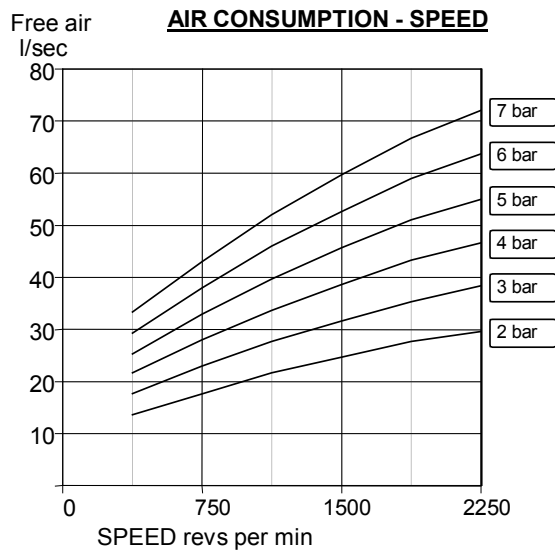
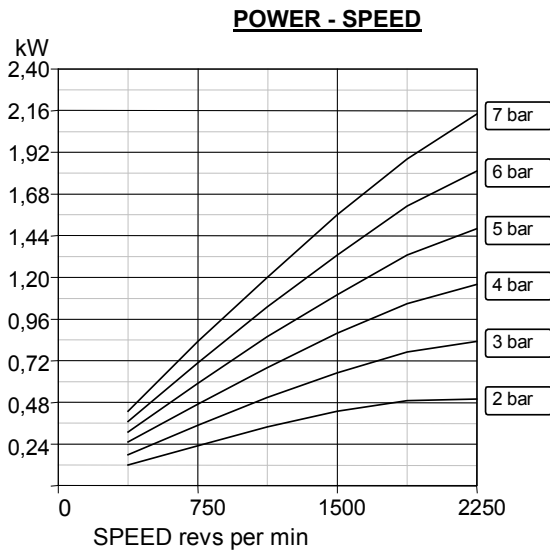




Performances VA6C-NL VA6J&X-NL VS6C-NL



A pressure regulator should be used to control the air pressure to the motor, to limit the maximum output torque applied to the driven assembly.



Muffler supplied with motor.
Motor is reversible.

Attitude: The motor can be operated in all positions.
Maximum temperature -20°C to +60°C

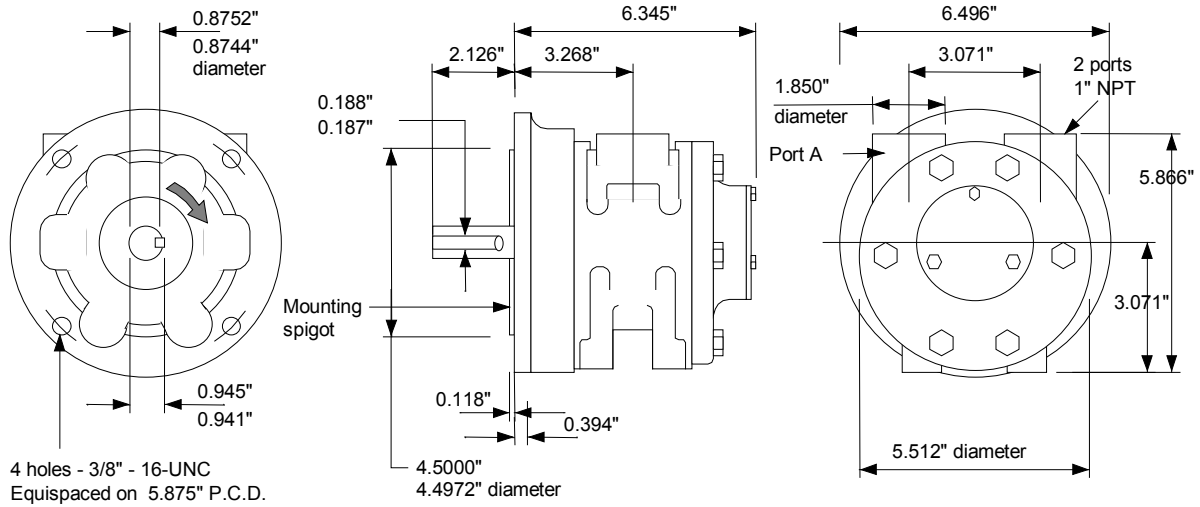
AIRLINE FILTRATION

Use 64 micron filtration or better.
Use dry air. Advised to use air with set dew point 20 degrees Celsius below ambient temperature

Maximum continuous speed 2250 rpm



VA8C-NL Vane Air Motor



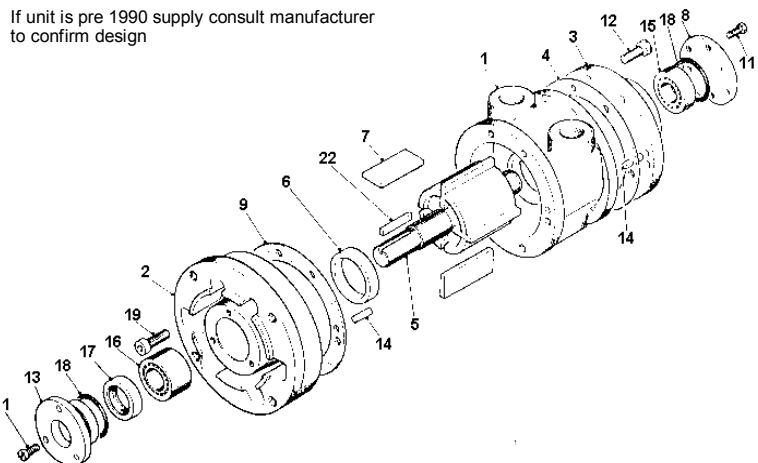
Attitude: The motor can be operated in all positions
 Maximum temperature -20°C to +60°C
 Muffler supplied with motor

Max. Overhung Force on shaft 620 N (140 lbf.)
 Axial loads should be kept to a minimum
 Mass 11.80 kg (26.01 lb.)

Note: With air inlet at port 'A', rotation is clockwise looking on shaft. For opposite rotation reverse ports.

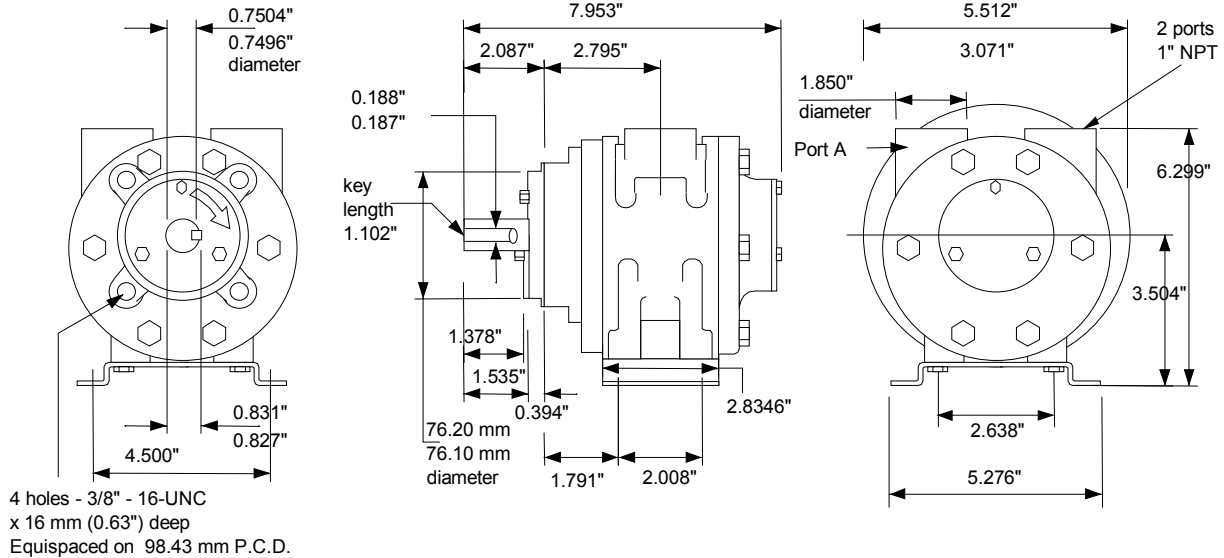
Exploded view with spare parts list

Item	Part No.	Description	Qty	Kit No.
01	780-001	Body BSP	1	
02	780-018	Front Plate NEMA 145 TC	1	
03	780-002	End Plate	1	
04	-	Gasket	2	789-915
05	780-910	Rotor Shaft Assy	1	
06	780-006	Ejection Ring	2	
07	-	Blades	4	789-915
08	740-008	Cover Plate	1	
09-1	-	Gasket	1	789-915
09-2	-	Gasket	1	789-915
09-3	-	Gasket	1	789-915
11	802-001	Screw	6	
12	802-032	Screw	6	
13	780-007	Seal Housing	1	
14	806-024	Dowel	4	
15	807-026	Bearing	1	
16	807-036	Bearing	1	
17	-	Oil Seal	1	789-915
18	-	O Ring	2	789-915
19	809-030	Screw	6	
22	811-020	Key	1	
	789-915	V8 Seal Kit		
	820-026	Silencer 1" BSP	1	





VA8J&X-NL Vane Air Motor



Attitude: The motor can be operated in all positions
 Maximum temperature -20°C to +60°C
 Muffler supplied with motor

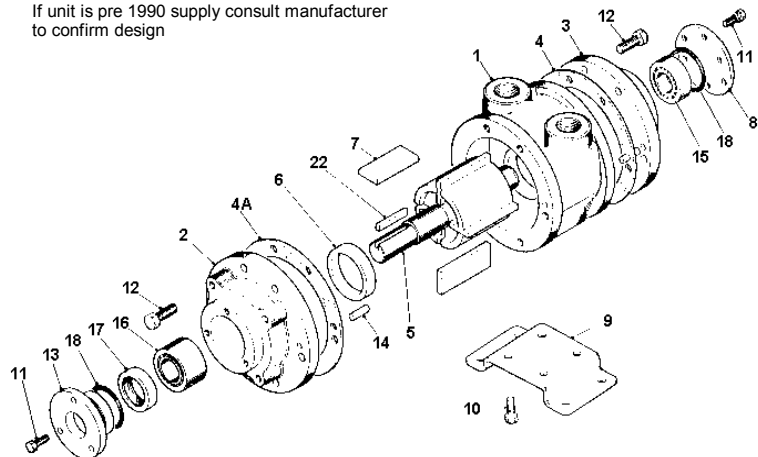
Max. Overhung Force on shaft 620 N (140 lbf.)
 Axial loads should be kept to a minimum
 Mass 11.10 kg (24.46 lb.)

Note: With air inlet at port 'A', shaft rotation is clockwise looking on shaft. For opposite rotation reverse ports.

Exploded view with spare parts list

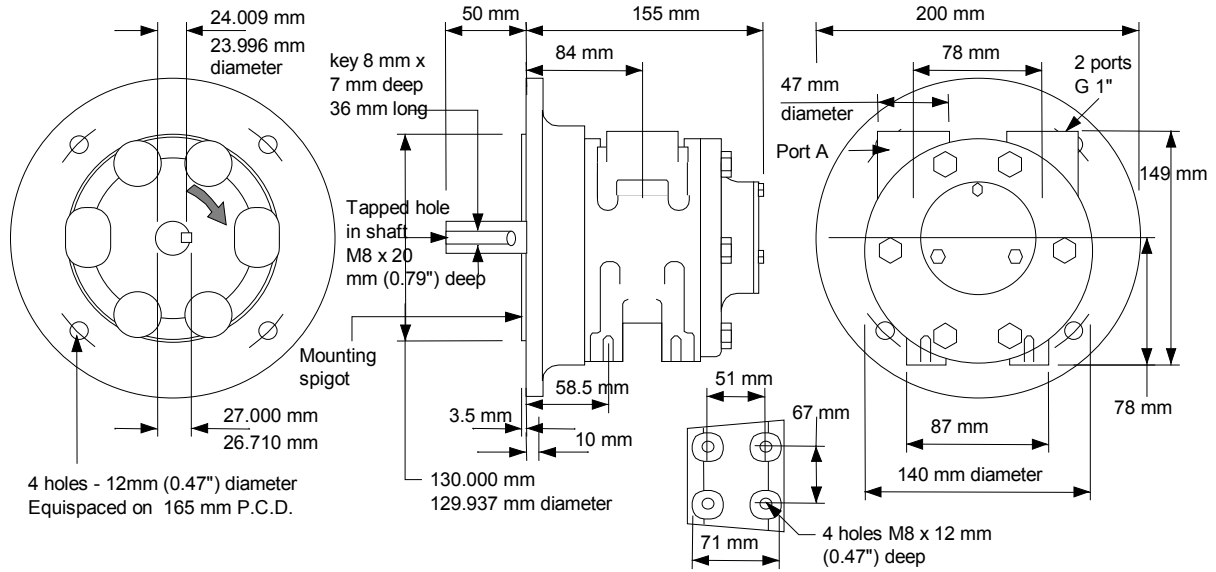
Item	Part No.	Description	Qty	Kit No.
01	780-001	Body BSP	1	
02	780-003	Front Plate	1	
03	780-002	End Plate	1	
04	-	Gasket	2	789-915
04A-1	-	Gasket	1	789-915
04A-2	-	Gasket	1	789-915
04A-3	-	Gasket	1	789-915
05	780-911	Rotor Shaft Assy	1	
06	780-006	Ejection Ring	2	789-915
07	-	Blades	4	789-915
08	740-008	Cover Plate	1	
09	780-023	Foot	1	
10	809-026	Capscrew	4	
11	802-001	Screw	6	
12	802-032	Set Screw	12	
13	780-007	Seal Housing	1	
14	806-024	Dowel	4	
15	807-026	Bearing	1	
16	807-036	Bearing	1	
17	-	Oil Seal	1	789-915
18	-	O Ring	2	789-915
22	811-021	Key	1	
	789-915	V8 Seal Kit		
	820-026	Silencer 1" BSP	1	

If unit is pre 1990 supply consult manufacturer to confirm design





VS8C-NL Vane Air Motor



Attitude: The motor can be operated in all positions
 Maximum temperature -20°C to +60°C
 Muffler supplied with motor

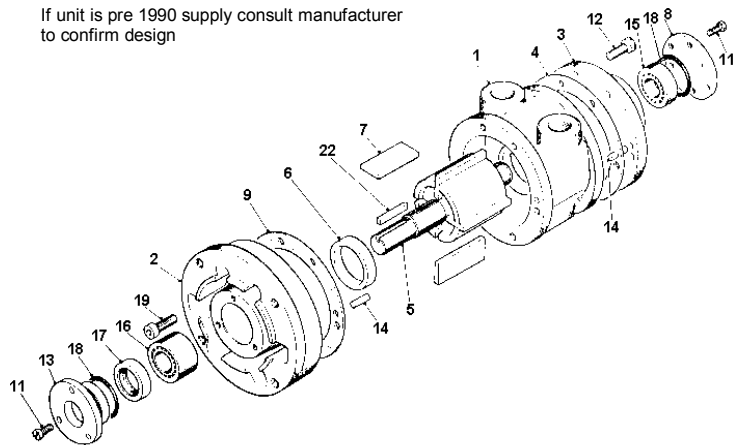
Max. Overhung Force on shaft 620 N (140 lbf.)
 Axial loads should be kept to a minimum
 Mass 12.20 kg (26.89 lb.)

Note: With air inlet at port 'A', rotation is clockwise looking on shaft. For opposite rotation reverse ports.

Exploded view with spare parts list

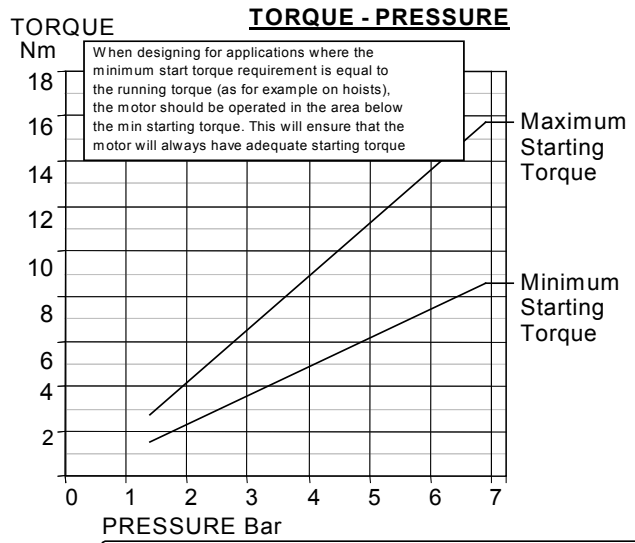
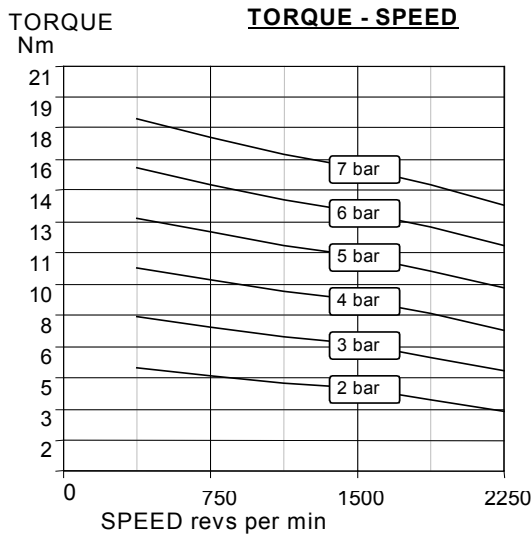
Item	Part No.	Description	Qty	Kit No.
01	780-101	Body BSP	1	
02	780-036	Front Plate D90	1	
03	780-002	End Plate	1	
04	-	Gasket	2	789-915
05	780-922	Rotor Shaft Assy	1	
06	780-006	Ejection Ring	2	
07	-	Blades	4	789-915
08	740-008	Cover Plate	1	
09-1	-	Gasket	1	789-915
09-2	-	Gasket	1	789-915
09-3	-	Gasket	1	789-915
11	802-001	Screw	6	
12	802-032	Screw	6	
13	780-007	Seal Housing	1	
14	806-024	Dowel	4	
15	807-026	Bearing	1	
16	807-036	Bearing	1	
17	-	Oil Seal	1	789-915
18	-	O Ring	2	789-915
19	809-030	Screw	6	
22	811-042	Key	1	
	789-915	V8 Seal Kit	1	
	820-006	Silencer 1" BSP	1	

If unit is pre 1990 supply consult manufacturer to confirm design

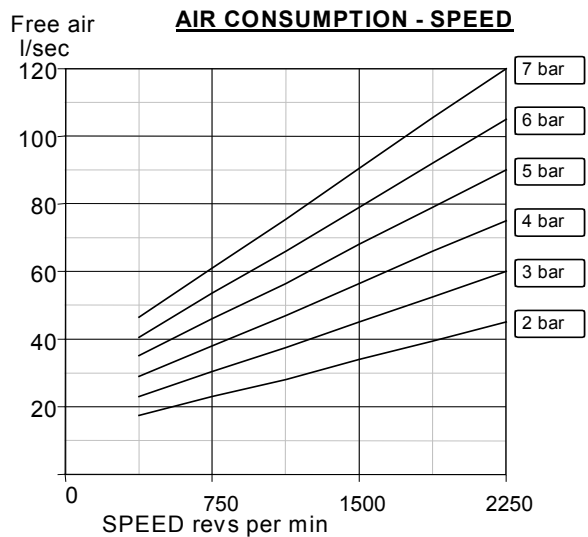
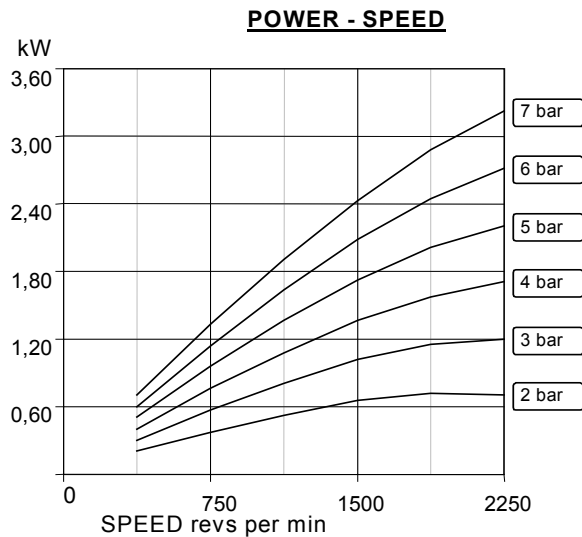




Performances VA8C-NL VA8J&X-NL VS8C-NL



A pressure regulator should be used to control the air pressure to the motor, to limit the maximum output torque applied to the driven assembly.



Muffler supplied with motor.
Motor is reversible.

Attitude: The motor can be operated in all positions.
Maximum temperature -20°C to +60°C

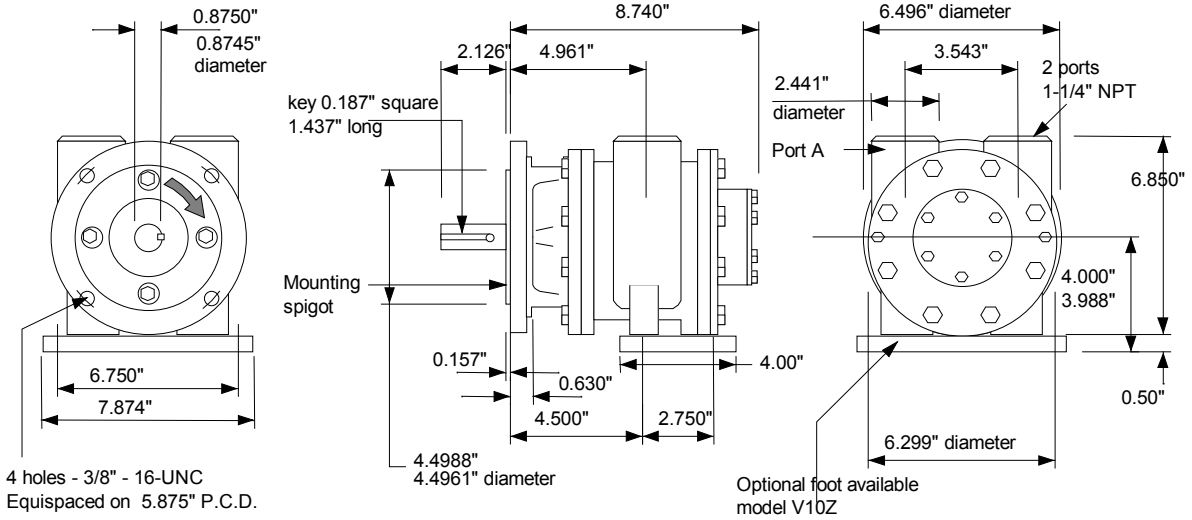
AIRLINE FILTRATION ON

Use 64 micron filtration or better.
Use dry air. Advised to use air with set dew point 20 degrees Celsius below ambient temperature.

Maximum continuous speed 2250 rpm



VA10C-NL Vane Air Motor



Attitude: The motor can be operated in all positions.
Maximum temperature -20°C to +60°C
Muffler supplied with motor.

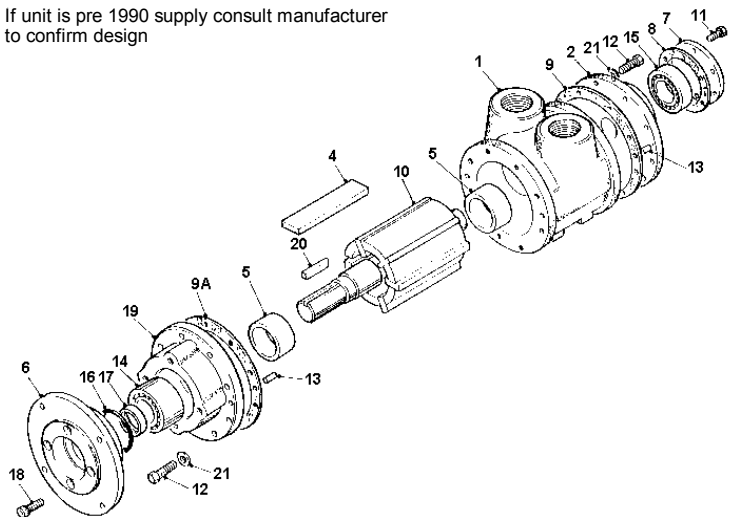
Max. Overhung Force on shaft 1750 N (400 lbf.).
Axial loads should be kept to a minimum.
Mass 24.00 kg (52.90 lb.).

**Note: With air inlet at port 'A',
rotation is clockwise looking on shaft.
For opposite rotation reverse ports.**

Exploded view with spare parts list

Item	Part No.	Description	Qty	Kit No.
01	790-001	Body NPT	1	
02	790-002	End Plate	1	
04	-	Blades	6	799-915
05	790-006	Ejection Ring	2	
06	790-018	Flange NEMA 145TC	1	
07	790-008	Cover Plate	1	
08	-	Gasket	1	799-915
09	-	Gasket	2	799-915
09A-1	-	Gasket	1	799-915
09A-2	-	Gasket	1	799-915
09A-3	-	Gasket	1	799-915
10	790-910	Rotor & Shaft Assy	1	
11	802-007	Screw	6	
12	802-033	Screw	16	
13	806-018	Dowel	4	
14	807-019	Bearing	1	
15	807-037	Bearing	1	
16	-	O Ring	1	799-915
17	-	Oil Seal	1	799-915
18	809-019	Cap Screw	4	
19	790-026	Front Cover SAE	1	
20	811-020	Key	1	
21	803-019	Washer	16	
	799-915	V10 Seal Kit		
	820-027	Silencer 1-1/4" BSP	1	

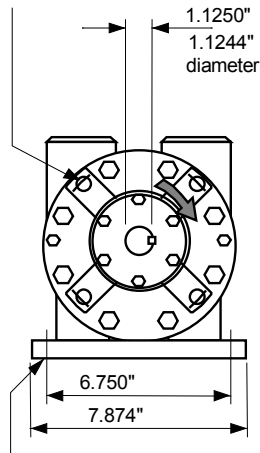
If unit is pre 1990 supply consult manufacturer to confirm design



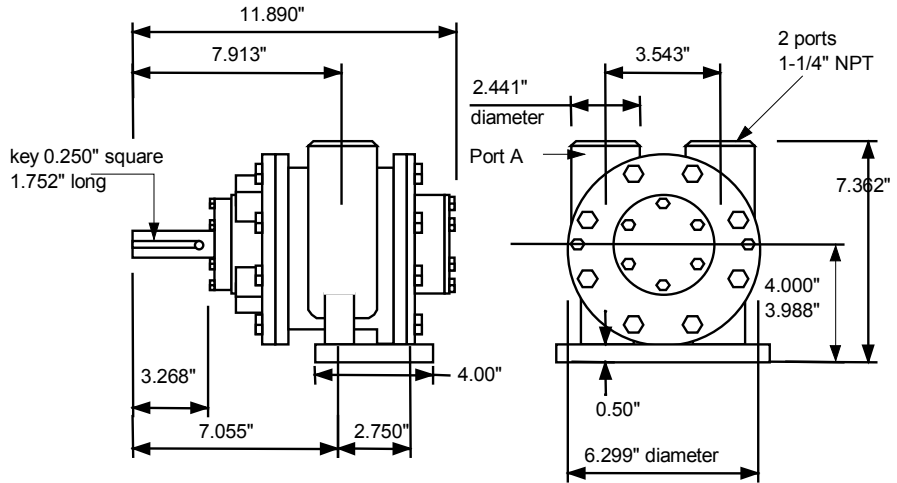


VA10J&X-NL Vane Air Motor

4 holes - 7/16" - 14-UNC
 x 16 mm (0.63") deep
 Equispaced on 98.370 mm P.C.D.



4 holes - 10.3 mm (0.406") diameter



Attitude: The motor can be operated in all positions.
 Maximum temperature -20°C to +60°C
 Muffler supplied with motor.

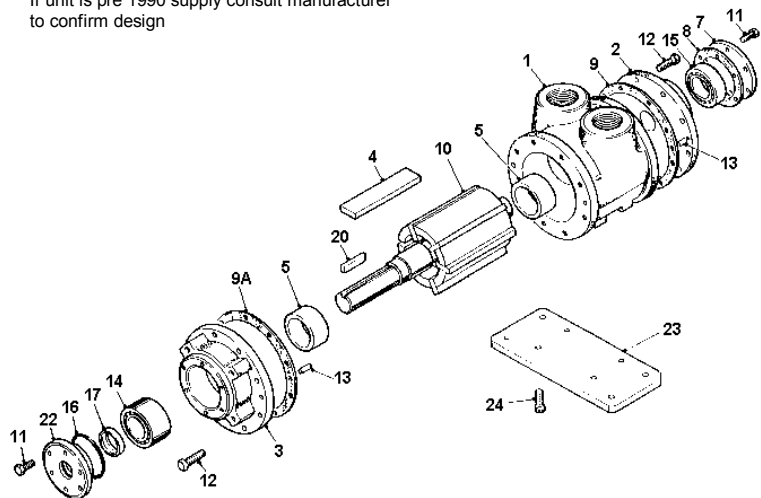
Max. Overhung Force on shaft 1750 N (400 lbf.).
 Axial loads should be kept to a minimum.
 Mass 22.00 kg (48.49 lb.).

**Note: With air inlet at port 'A',
 rotation is clockwise looking on shaft.
 For opposite rotation reverse ports.**

Exploded view with spare parts list

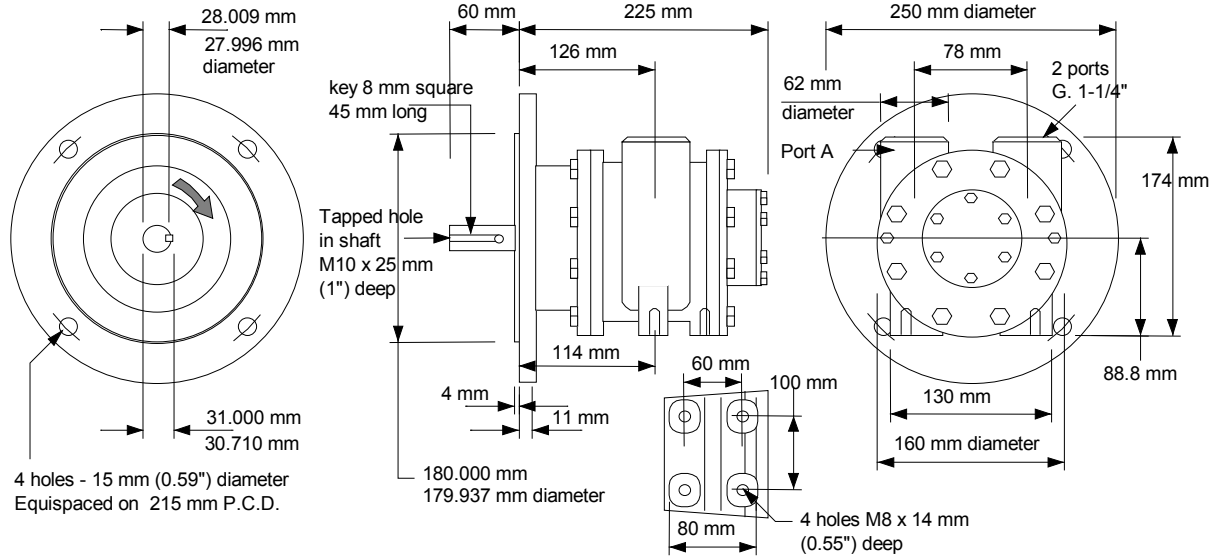
Item	Part No.	Description	Qty	Kit No.
01	790-001	Body NPT	1	
02	790-002	End Plate	1	
03	790-003	Front Plate	1	
04	-	Blades	6	799-915
05	790-006	Ejection Ring	2	
07	790-008	Cover Plate	1	
08	-	Gasket	1	799-915
09	-	Gasket	2	799-915
09A-1	-	Gasket	2	799-915
09A-2	-	Gasket	2	799-915
09A-3	-	Gasket	2	799-915
10	790-911	Rotor & Shaft Assy	1	
11	802-007	Screw	12	
12	802-033	Screw	16	
13	806-018	Dowel	4	
14	807-037	Bearing	1	
15	807-019	Bearing	1	
16	-	O Ring	1	799-915
17	-	Oil Seal	1	799-915
20	811-024	Key	1	
21	803-019	Washer	16	
22	790-007	Seal Housing	1	
23	790-015	Base Plate	1	
24	809-008	Capscrew	4	
	799-915	V10 Seal Kit		
	820-027	Silencer 1-1/4" BSP	1	

If unit is pre 1990 supply consult manufacturer to confirm design





VS10C-NL Vane Air Motor



Attitude: The motor can be operated in all positions.
 Maximum temperature -20°C to +60°C
 Muffler supplied with motor.

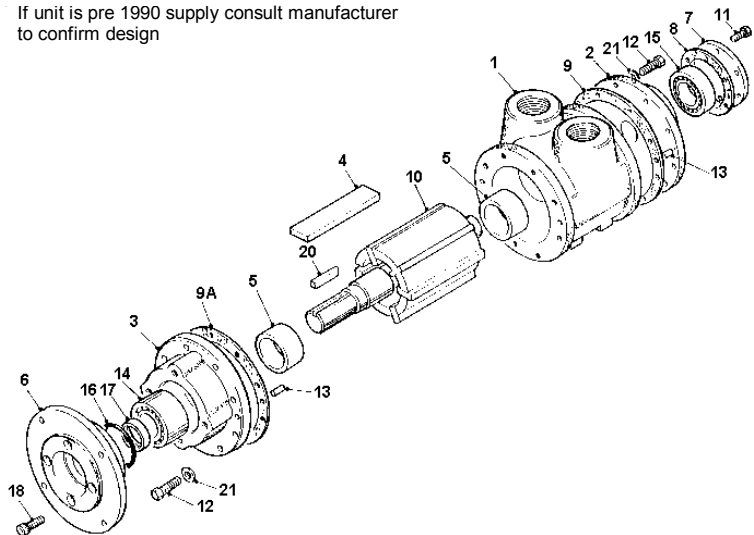
Max. Overhung Force on shaft 1750 N (400 lbf.).
 Axial loads should be kept to a minimum.
 Mass 27.00 kg (59.51 lb.).

Note: With air inlet at port 'A', rotation is clockwise looking on shaft. For opposite rotation reverse ports.

Exploded view with spare parts list

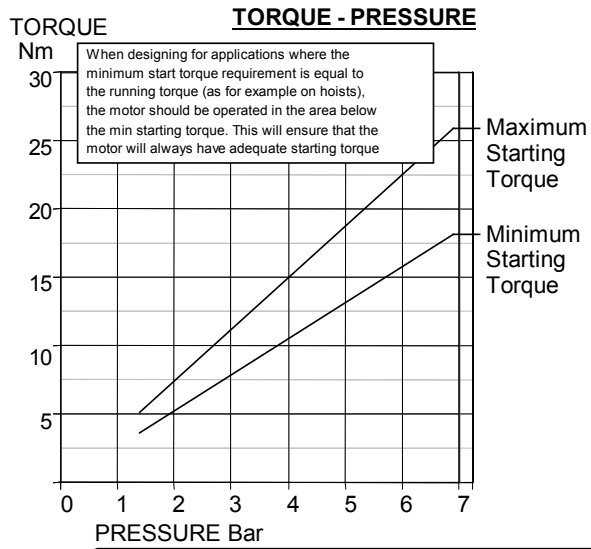
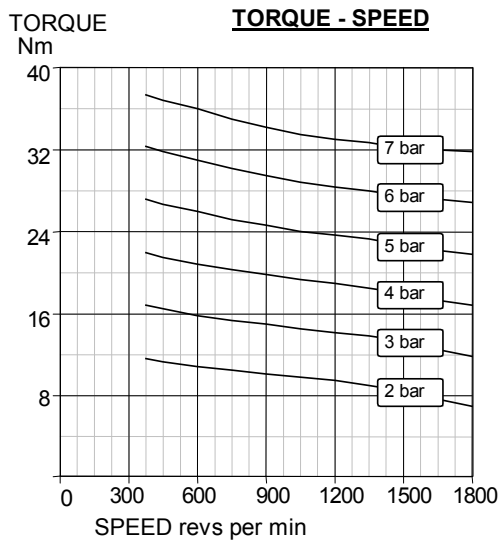
Item	Part No.	Description	Qty	Kit No.
01	790-101	Body BSP	1	
02	790-002	End Plate	1	
03	790-026	Front Cover	1	
04	-	Blades	6	799-915
05	790-006	Ejection Ring	2	
06	790-037	Flange D100	1	
07	790-008	Cover Plate	1	
08	-	Gasket	1	799-915
09	-	Gasket	2	799-915
09A-1	-	Gasket	1	799-915
09A-2	-	Gasket	1	799-915
09A-3	-	Gasket	1	799-915
10	790-923	Rotor & Shaft Assy	1	
11	802-007	Screw	6	
12	802-033	Screw	16	
13	806-018	Dowel	4	
14	807-037	Bearing	1	
15	807-019	Bearing	1	
16	-	O Ring	1	799-915
17	-	Oil Seal	1	799-915
18	809-019	Cap Screw	1	
20	811-033	Key	1	
21	803-019	Washer	1	
	799-915	V10 Seal Kit	1	
	820-007	Silencer 1-1/4" BSP	1	

If unit is pre 1990 supply consult manufacturer to confirm design

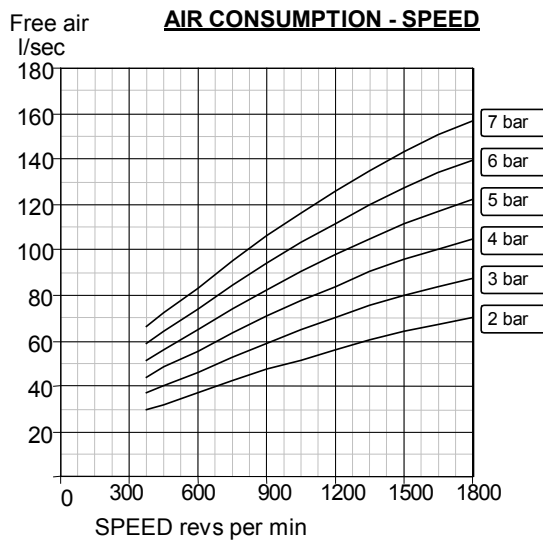
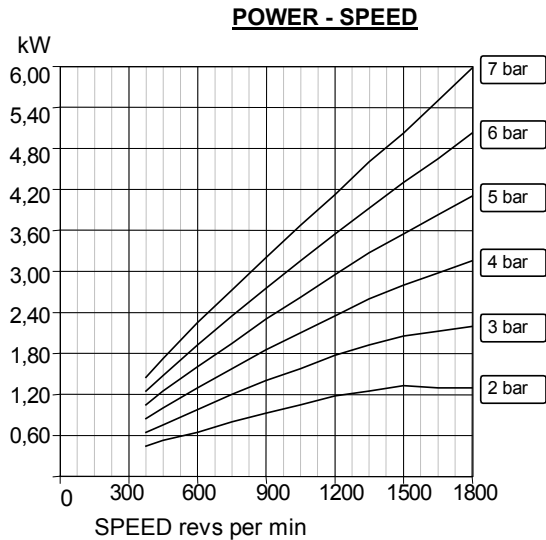




Performances VA10C-NL VA10J&X-NL VS10C-NL



A pressure regulator should be used to control the air pressure to the motor, to limit the maximum output torque applied to the driven assembly.



Muffler supplied with motor.
 Motor is reversible.
 Attitude: The motor can be operated in all positions.
 Maximum temperature -20°C to +60°C

AIRLINE FILTRATION
 Use 64 micron filtration or better.
 Use dry air. Advised to use air with set dew point 20 degrees Celsius below ambient temperature.

Maximum continuous speed 1800 rpm